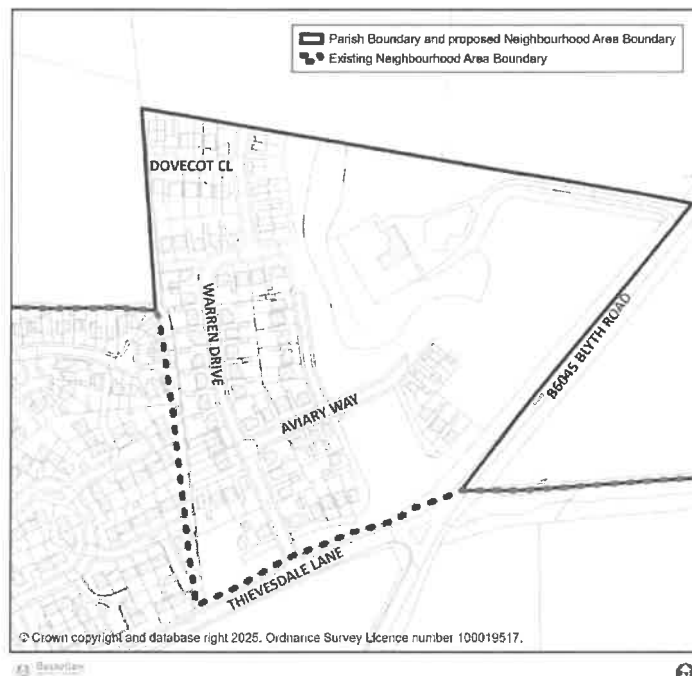


**IN ACCORDANCE WITH THE NEIGHBOURHOOD PLANNING (GENERAL)
REGULATIONS 2012 (AS AMENDED), PART 2 REGULATION 6**

**REQUEST TO MODIFY THE BOUNDARY OF THE CARLTON IN LINDRICK
NEIGHBOURHOOD PLAN AREA**

Bassetlaw District Council is currently considering a request from Carlton in Lindrick Parish Council to modify the Carlton in Lindrick Neighbourhood Area boundary (the boundary that relates to the Neighbourhood Plan). The proposed change concerns the area surrounding Aviary Way. As detailed on the map below, the existing boundary is identified by the dotted line, and the proposed boundary identified by the solid line. The proposal will align the Neighbourhood Area boundary with the boundary of the Parish, itself modified in 2023.



The District Council is consulting interested parties on the applications for a period of six weeks, from **Tuesday 28 January 2025** until **5PM on Tuesday 11 March 2025**. All documents can be viewed on the Council's website at <https://www.bassetlaw.gov.uk/planning-and-building/planning-services/neighbourhood-plans/all-neighbourhood-plans/carlton-in-lindrick-neighbourhood-plan/>. If you are unable to view the documents via the website, please contact the Neighbourhood Planning Team on 01909 533 495 and we can discuss how to make the application details available to you.

Any comments should be made in writing via one of the following methods:

Email: neighbourhoodplanning@bassetlaw.gov.uk

Post: Neighbourhood Planning, Bassetlaw District Council, Queen's Buildings, Potter Street, Worksop, Notts. S80 2AH.

All comments made in relation to these applications will be made available for public inspection and copying.

Signed: Head of Planning & Place
Bassetlaw District Council
January 2025

