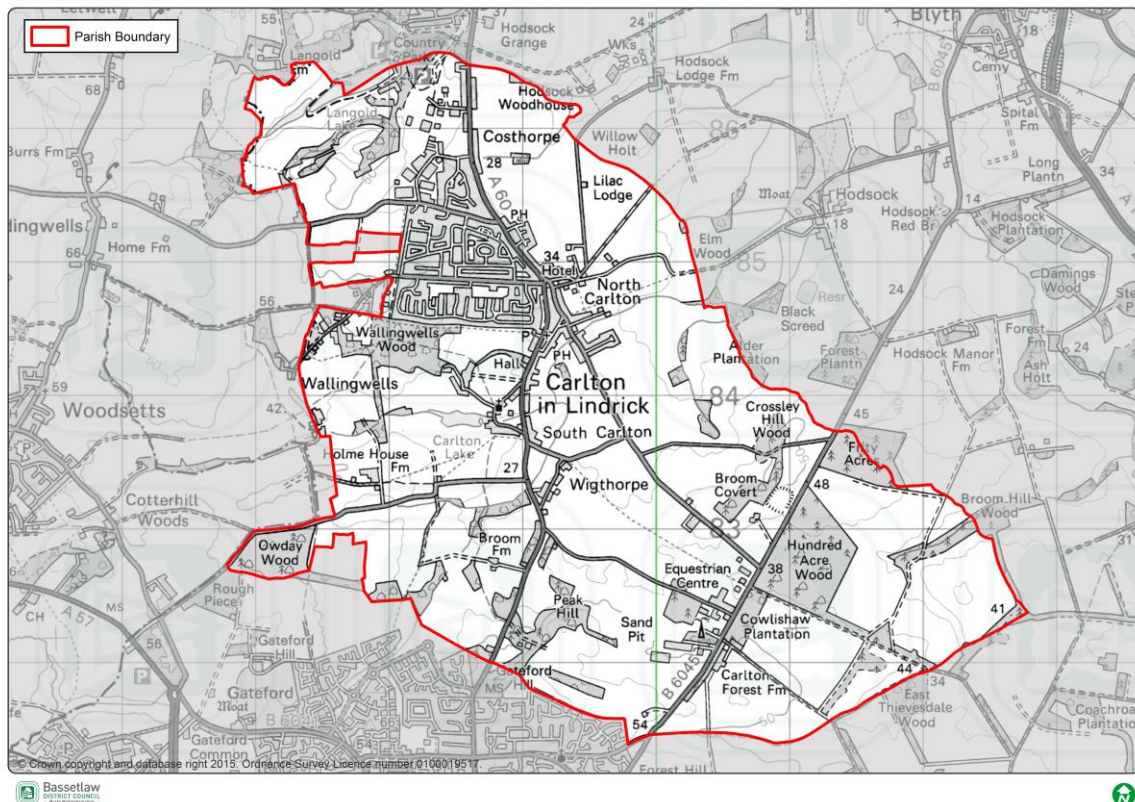


Carlton in Lindrick Neighbourhood Plan

Our Vision and Policy Intentions

Carlton in Lindrick



Published by Carlton Parish Council



LOTTERY FUNDED

Background

What is a Neighbourhood Plan?

Government legislation has empowered communities to be able to shape their future with Neighbourhood Plans which will become enshrined in the County's Local Development Plans for the next 20 years. The Neighbourhood Plan has been informed by local opinions on various planning matters e.g. green space, provision as well as location of new facilities and infrastructure, improvement of public spaces, social housing, housing designs and preferred sites and locations for new housing and businesses.

Where are we in the process?

The Parish Council established a Neighbourhood Plan steering group in 2015 to produce a plan for the Parish. Over the past few months numerous public consultations have taken place, and as a result policy intentions have been produced from the feedback you provided. It is intended that these policy themes will be developed into planning policies that will be used in order to make planning decisions on future applications within the Parish.

What's Next?

A draft Neighbourhood Plan, including draft policies, will be produced and consulted on during April 2016. This consultation will last for 6 weeks and your feedback then will be welcome.

Once that consultation has closed, we will then review all comments and amend the Plan accordingly. Carlton in Lindrick Parish Council will then submit the Plan to Bassetlaw Council who will organise an independent examination. If successful, you will be asked to vote in a referendum on whether you think the District Council should use the plan to decide future planning applications.

Our Vision

In 20 years' time, Carlton in Lindrick will be a thriving, sustainable rural community in which people enjoy living, working and visiting.

Our Objectives:

- **Managing new developments, including sustainable employment of our brownfield sites;**
- **Develop a type and tenure of new homes that meet the needs of local people;**
- **Protecting, and where possible, enhancing our historic environment, community and leisure facilities, retail provision and public open spaces;**
- **Improving our local green infrastructure in order to increase walking, cycling and horse riding opportunities within the community;**
- **Reduce traffic congestion and improve road safety within the Parish;**
- **Improve the skill and knowledge of local through encouraging new employment; and**
- **Preserve the rural nature of the village.**

Policy Intentions

1. *Housing and Affordable Housing*

Policies will be produced to manage the type, tenure and location of new housing developments within the Parish.



2. *Regeneration and Employment*

New policies will seek to encourage regeneration and new high tech employment to the village in order to improve local skill and knowledge.

3. *Design and Character*

New developments must reflect and respect the character of the parish. Residential development in the open countryside and in a ribbon from along approach roads will not be supported. New housing developments should either be within or on existing brownfield sites within the Parish.

This is designed to maintain the rural character of the village and the open areas of countryside between Worksop and Langold.

4. *Historic Environment*

This policy will reinforce the preservation of our historic assets including our conservation areas, ancient monuments and listed buildings.

5. *Langold Country Park*

A new policy will be produced in order to protect the country park for its important environmental quality, but also to maximize its potential as a tourist and recreational asset.

6. *Retail Provision*

A new policy will seek to protect our existing retail provision.

We will also consider a new 'retail area' designation where new provision will be encouraged in order to improve the quality and choice of retail in the Parish.

7. *Green Infrastructure and Public Access*

A new policy will seek to protect and enhance our existing green infrastructure such as public footpaths, cycle ways and bridleways, whilst supporting the creation of new links within the Parish.

8. *Local Green Space*

A policy will seek to designate our open spaces and recreation areas as a 'local green space'. This will protect them for future generations.

9. *Community Services and Facilities*

New policies would be developed to protect our existing buildings that provide local services. We will also look to encourage the development of new services and facilities within the Parish.

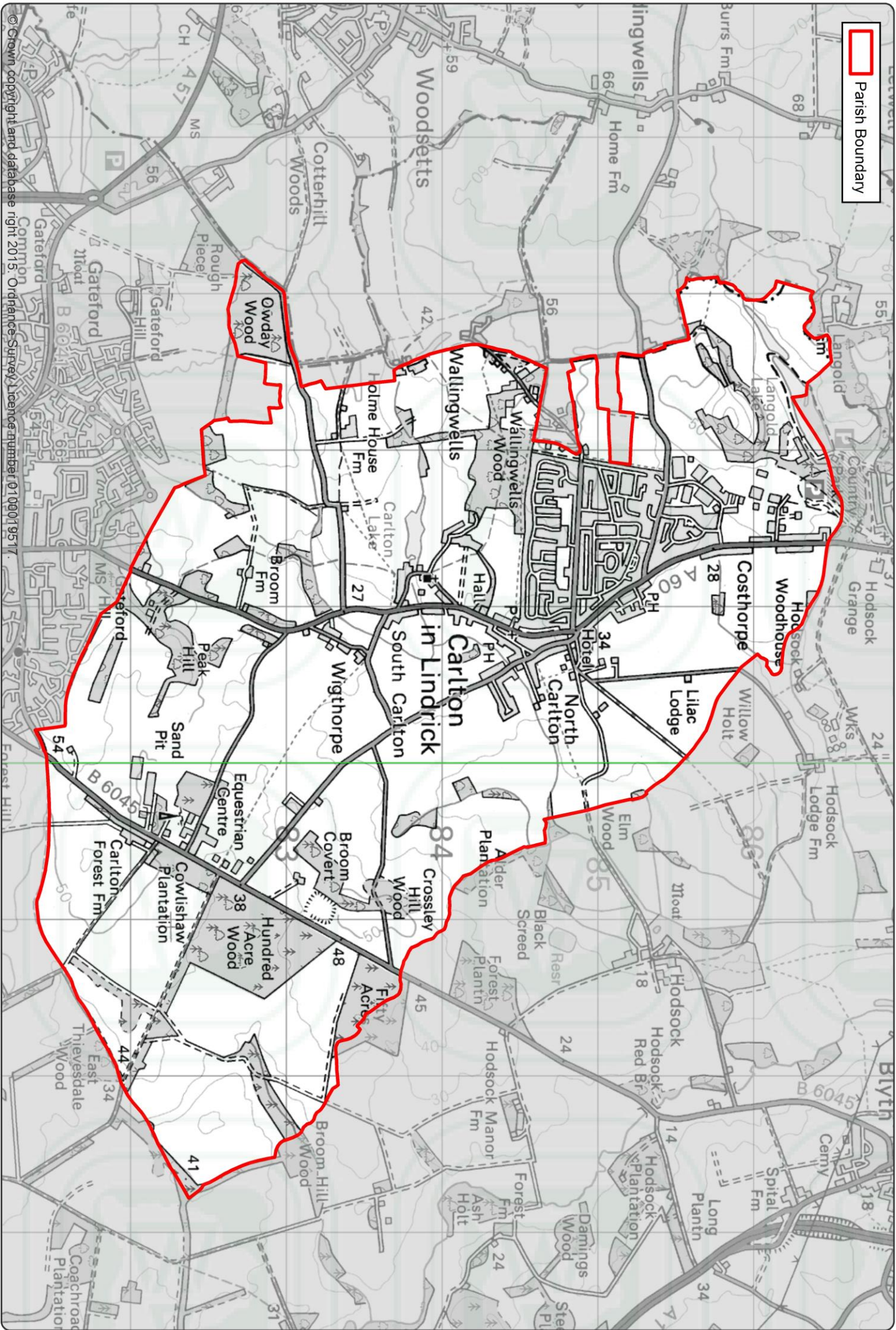
10. *Infrastructure and Transport*

A policy will look to encourage new and improve existing infrastructure i.e. our broadband connections, bus services and road safety

Information

For more information, please visit:

www.carlton-in-lindrickparishcouncil.org



Your Views are welcome

In response to recent consultation events we have tried to include all relevant planning related issues.

Do you think we have captured everything? If not, please state your idea(s) below.....

If you have made a comment, please send this comment form back to:

Civic Centre, Long Lane, Carlton in Lindrick, S81 9AP

Or email them to: parishcouncil@civiccentre.org.uk