



CARLTON IN LINDRICK

DRAFT NEIGHBOURHOOD PLAN Consultation document January 2018





Draft Plan public consultation

This draft Neighbourhood Plan for Carlton in Lindrick is the village's plan for future land use planning and has been produced by the Local Community.

From previous public consultation, you wanted Carlton in Lindrick to develop sensitively and sustainably with infrastructure keeping pace with the anticipated level of growth over the next 15- 20 years. You want better designed housing, providing a suitable type and mix of property to suit our local needs. You also told us you would like to see new access routes to other areas of the parish and a better range of community facilities.

This Consultation is your opportunity to let us know if we have included the right things in the Neighbourhood Plan before we submit the Plan to Bassetlaw District Council where it will be independently examined. If successful, parishioners will vote in a public referendum (yet to be organised) on their support for Bassetlaw District Council using the Neighbourhood Plan to help determine future planning applications for the Parish of Carlton in Lindrick.

Remember a Neighbourhood Plan can only deal or influence 'land-use' related activity. Therefore, not every issue raised can be included in the Plan.

The consultation period runs from the 25th January until Monday the 16th March 2018.

Please let us know what you think by completing the comment form at the end of this Plan or on our website:

<http://www.carlton-in-lindrickparishcouncil.org/>

If you complete your comments on paper, then please send them to:

parishcouncil@civiccentre.org.uk

Or alternatively you can post them to:

Carlton in Lindrick Parish Council

Civic Centre

Long Lane

Carlton in Lindrick

S81 9AP



Foreward

“The Localism Act 2011 granted powers to Parish Council’s to prepare land use planning documents. The Act provides an opportunity for local communities to have direct input into the development of their local area by preparing a plan for a 15-year period.

The Plan for Carlton in Lindrick has been prepared by a Local Plan Steering Group comprising Parish and District Councillors and members of the local community. It includes proposals which have been put forward as a result of extensive consultation with all sectors of the local community.

The draft plan is now available for local consideration and additional suggestions prior to submission for approval by the Bassetlaw District Council”.

P. Goulding, Carlton in Lindrick Parish Council.



Contents

1	Introduction	5
2	Community Vision.....	12
3	Community Objectives	13
4	Neighbourhood Development Planning Policies	15
5	Sustainable Development	16
6	Housing Development.....	18
7	Housing type and mix.....	20
8	Allocating Land for Development.....	25
9	Firbeck Colliery – Site 1	27
10	Doncaster Road – Site 2	29
11	Land behind existing homes at Doncaster Road – Site 3.....	31
12	Residential Infill Development Opportunity.....	33
13	Employment and local business	35
14	Design Principles	38
15	Settlement Break	45
16	Important Views along Doncaster Road	48
17	Langold Country Park	55
18	Local Green Spaces	60
19	Enhancing Community facilities	67
20	Neighbourhood Centres.....	71
21	Community Aspirations and Priority Projects	76
22	Implementation and Review of this Neighbourhood Plan	77
23	Appendix 1: Community Consultation	78
24	Appendix 2: Site Assessment Report.....	79

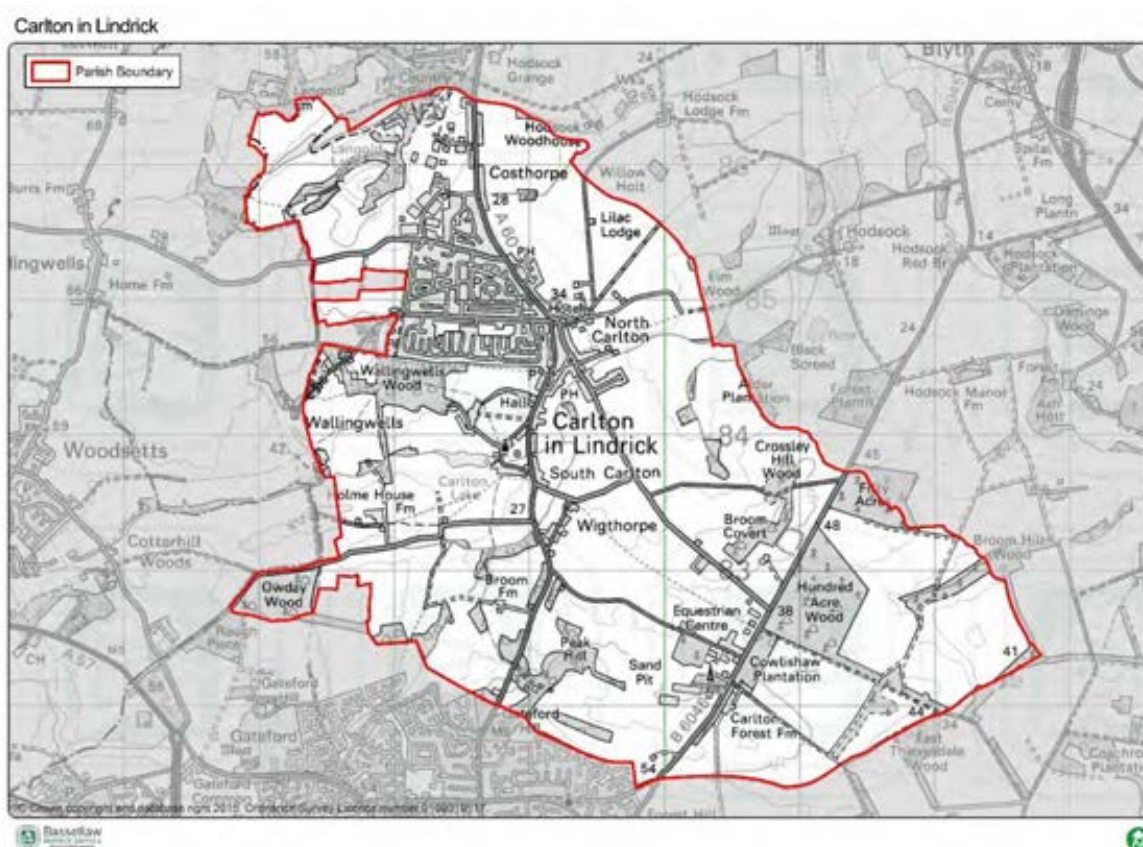


1 Introduction

What is the Carlton in Lindrick Neighbourhood Plan?

- 1.1 This Neighbourhood Development Plan has been prepared by and for the local people of Carlton in Lindrick Parish, which also includes the settlements of Costhorpe, Wallingwells and Wigthorpe.
- 1.2 The Localism Act 2011 provides new powers for Parish Councils and community forums to prepare land use planning documents. The Parish area shown in Figure 1 below was designated as a Neighbourhood Plan area and Carlton in Lindrick Parish Council was designated as a qualifying body to prepare a Neighbourhood Plan in January 2015.

Figure 1: Neighbourhood Plan Area



- 1.3 A Neighbourhood Plan is a new type of planning document. Working with and on behalf of its parishioners, Carlton in Lindrick Parish Council has prepared this land use development plan that will shape future growth across the parish. The Parish Council has assessed the development required to enable the village to remain sustainable serving current and future residents. When it has been 'made' by Bassetlaw District Council (following rigorous consultation, independent examination and a local referendum) the policies will be used in assessing planning applications in the Neighbourhood Plan area (figure 1).



- 1.4 The document has been prepared by the Carlton in Lindrick Neighbourhood Plan Steering Group. Membership includes a collection of residents and local councillors and is led by the Parish Council. The Plan runs from 2018 - 2033 and includes the whole of the Parish of Carlton in Lindrick.
- 1.5 Various public consultation events have been held to gain an understanding of the views of residents, businesses and key agencies that operate within the Parish (see page 10/11 for the list). The consultation feedback and the evidence from the studies undertaken have been combined and are fundamental to the formulation of the policies within this Neighbourhood Development Plan. Associated documents and information are available on the Parish Council website:

<http://www.carlton-in-lindrickparishcouncil.org/>

Why are we doing a Neighbourhood Plan?

- 1.6 Carlton in Lindrick is considered a small 'Local Service Centre' within the adopted Bassetlaw Core Strategy and Development Management Policies DPD and does have a reasonable level of services and facilities that cater for an increasing population. The village has expanded over the past 20 years and there are social-economic issues that continue to affect the Parish. In addition, due to the lack of up-to-date planning policy, there is a concern within the community that local context is not always given sufficient consideration, and this is where a Neighbourhood Plan can complement existing and emerging planning policy, whilst providing up-to-date local context.
- 1.7 Local Planning policy has always been formulated at District level and Bassetlaw District Council continues to have a legal duty to provide this via its adopted Core Strategy and Development Management Policies DPD 2011. Both this Neighbourhood Plan and District's planning policies must also be in general conformity with the National Planning Policy Framework (NPPF) to meet the set of 'basic conditions' as stated within the Neighbourhood Planning Regulations (amended) 2012.
- 1.8 This Neighbourhood Plan supports the intention of the adopted Bassetlaw Core Strategy and Development Management Policies (2011) plan for sustainable development and seeks to, where existing policies provide a lack of detail, supplement existing policies with local context.
- 1.9 During the preparation of this Neighbourhood Plan, existing planning policies have been considered and it is not the intention of this Plan to replicate or conflict with any existing planning policies within either the National Planning Policy Framework or the Core Strategy.



- 1.12 While Carlton in Lindrick itself has a reasonable range of services, including schools and health facilities, it has also lost some facilities over recent years and it mostly relies on the larger nearby settlements such as Worksop, for major retail and other key services.
- 1.13 The northern most part of the parish is dominated by a vacant former colliery site. This will need to be utilised over this plan period as it has significant regeneration potential. This is already being realised through existing planning permissions for the redevelopment of this site.
- 1.14 The area is well connected and has transport and road links to nearby settlements such as Worksop, Doncaster and Sheffield. A recent and expanding international airport is also only 9 miles away and provides opportunity for improving the local area.
- 1.15 At present, however, the local economy is still recovering from its former mining economic and employment base. Its key characteristics are that of low skilled retail, light manufacturing, agricultural and distribution industries and employment. There is a high level of commuting outside of the parish for employment and higher paid jobs. There is also evidence that while relatively buoyant in terms of its low unemployment rate, it is still weighted towards employment opportunities at the lower end of the regional and national pay scale. Similarly, there is low demand for local retail and office space in the parish.
- 1.16 Carlton in Lindrick has a rich and important historic and natural environment that contributes significantly towards the quality of life, and character, of the parish. The surrounding countryside is an asset (in terms of its landscape and biodiversity), with a reasonable network of footpaths and recreational opportunities offered by Langold Country Park and the various sports and other recreational provision in the parish.
- 1.17 The parish has a wide range of heritage assets, including listed buildings, a conservation area and a registered park and garden. The parish also supports local wildlife sites that reflect the variety of its rural habitat and geology.
- 1.18 The quality of life available to most residents is generally perceived as good. However, there are issues with some poor-quality housing and low paid employment within the area. Some people do travel outside the area to seek higher paid employment opportunities.
- 1.19 Average house prices within the parish are lower than surrounding areas, but they are considered as good value for money. Even so, the relatively low wage levels of many residents' mean that there is a lack of affordable housing provision, particularly two and three-bedroom houses. Carlton in Lindrick, like other areas, also has a growing percentage of older residents, which is likely to increase demand for specific types of housing (e.g. bungalows) and a requirement for increased numbers of care-homes and sheltered accommodation schemes.



1.20 It is evident that Carlton in Lindrick has significant strengths, which can be built upon. Much of the parish is an attractive place and it has good access to a variety of places nearby. It has many advantages that can serve to drive growth and regeneration, in appropriate locations, including:

- A good strategic location in relation to the sub-region and more widely, in terms of accessibility to other locations;
- A strong network of green infrastructure and attractive countryside, as well as, an important variety of important heritage assets;
- Low house prices in comparison to other areas of the District;
- Clear regeneration opportunities;
- Opportunities for increased Tourist activity, notably through the improvement of Langold Country Park.

1.21 There are also issues that serve to detract from the overall 'offer' in Carlton in Lindrick, most notably:

- Low market demand for housing;
- A lack of a diverse and well-paid employment offer with the shortcomings, in some areas, in relation to skills and education attainment;
- The need to enhance its retail offer and quality of the local environment;
- The need to provide additional low-cost housing and accommodation for older people.



How has this Neighbourhood Plan been developed?

- 1.22 As part of the process, Carlton in Lindrick Parish Council has been committed in enabling the community to influence the development of the Plan as well as creating an informative evidence base on the current issues affecting the village. On behalf of the Council, the Neighbourhood Plan Steering Group have undertaken a significant level of community consultation at various stages from events, meetings, drop-in sessions and regular updates in the local newsletter, social media and the website.



- 1.23 From these events 'key' issues were raised by the community as areas where the Neighbourhood Plan could provide important influence in delivering these social-economic benefits.

Table 1: List of Community Consultation Events

Event	Event Information	Attendance
Neighbourhood Plan launch event	To formally introduce the NDP process and gauge local support	45
Business Breakfast	To have a discussion with local businesses about their issues and aspirations	23
Household Survey	A survey was distributed to each property to gauge opinion about how the community should change	258
Business Survey	A survey was distributed to each business to gauge opinion about how the community should change	17
Village Fete	The NDP group provided information and asked people about the proposed vision and objectives	40



Event	Event Information	Attendance
Village Fete	An update on the progress of the NDP was provided to interested people.	37
Site Allocations Public Event	To enable local people to comment on the proposed development sites in the village.	150



- 1.24 The following vision and set of community objectives outline how this Neighbourhood Plan aims to build on these advantages and address the issues of concern to deliver growth and improve the area in a way it will benefit existing, as well as, new residents to the area.

2 Community Vision

By 2031, Carlton in Lindrick will be a better place to live, with a strong sense of identity and community spirit.

The village will have benefited from a regenerated Firbeck Colliery Site and other developments that have provided a greater mix of properties, encouraged further local employment opportunities and support the continued sustainability of the area.

New developments will have 'raised the bar' in terms of design and support our local facilities, assets and local heritage.

The village will be a greener place with improved access to useable and pleasant areas of woodland and open space.

Our important settlement break between Carlton and Langold will be persevered and views along Doncaster Road retained.



2.1 To achieve our vision, we have created a list of community objectives.

3 Community Objectives

Community Objective 1:

Allocate new developments and diversify the type and tenure of new homes that meet the needs of local people and to encourage regeneration of the community.

Community Objective 2:

Protecting, and where possible, enhancing our retail, community and leisure facilities and valued public open spaces.

Community Objective 3:

Improving our local green infrastructure and preserving our existing settlement break between Carlton and Langold and the open views of the Ryton Valley from Doncaster Road.

Community Objective 4:

Improve the skills and knowledge of local people through encouraging new employment opportunities.

Community Objective 5:

Preserve the rural nature of the village.



Consulting the Community: Statement of Intent

- 3.1 This Plan reflects the community's need to have a greater involvement and influence in the future growth of the plan areas. The importance of pre-application consultation is endorsed in paragraph 188 of the National Planning Policy Framework.
- 3.2 The local community want their extensive local knowledge about this area to help inform the preparation of future planning applications. Furthermore, these proposals must consider the issues and concerns of the community across the Parish and recommends consultation on minor proposals.
- 3.3 Ensuring the community are involved at an early stage in the process will be of benefit to all parties as issues can be discussed and resolved early in the development of a scheme.
- 3.4 The requirements necessary to constitute, community consultation' are set out in the Statement of Intent below.

Statement of Intent

Those submitting proposals for development are encouraged to actively engage in consultation with local people and other stakeholders. Engagement with the Parish Council will be welcomed.

In consulting with the community, it will be considered best practice for the applicant to follow the guidelines set out in Appendix 1.



4 Neighbourhood Development Planning Policies

- 4.1 The Neighbourhood Plan Policies will be used to aid the delivery of development in Carlton in Lindrick up to 2031. They are formulated based on the community objectives and vision and will contribute to the delivery of the growth requirements as stated within the District's adopted Core Strategy and Development Management Policies DPD 2011. When development is proposed within this Neighbourhood Area, decisions will be made using the policies contained in this Neighbourhood Plan alongside those contained in the District's Adopted Local Development Plan.

List of Planning Policies

Policy 1: Sustainable Development

Policy 2: Housing Mix and Type

Policy 3: Allocation of land at Firbeck Colliery (Site 1)

Policy 4: Allocation of land at Doncaster Road (Site 2)

Policy 5: Allocation of land behind existing properties along Doncaster Road (Site 3)

Policy 6: Residential Infill Development

Policy 7: Enabling Employment Opportunities

Policy 8: Development and Design Principles

Policy 9: Carlton Conservation Area

Policy 10: Settlement Break

Policy 11: Important Views

Policy 12: Langold Country Park

Policy 13: Local Green Spaces

Policy 14: Enhancing our Community Facilities

Policy 15: Neighbourhood Centres



5 Sustainable Development

- 5.1 The Government's overarching objective of achieving sustainable development, is clearly defined within the National Planning Policy Framework with the role for Neighbourhood Development Plans as a key delivery vehicle being clearly identified. Sustainable development is development that meets the needs of the present without compromising the ability of future generations to meet their own needs and involves seeking positive improvements in the quality of the built, natural and historic environment, as well as in people's quality of life.
- 5.2 The Government has defined, through the NPPF, what sustainable development means in practice. This confirms that there are three dimensions to sustainable development that should not be undertaken in isolation, because they are mutually dependent. The three roles are:
- **an economic role** – contributing to building a strong, responsive and competitive economy, by ensuring that sufficient land of the right type is available in the right places and at the right time to support growth and innovation; and by identifying and coordinating development requirements, including the provision of infrastructure;
 - **a social role** – supporting strong, vibrant and healthy communities, by providing the supply of housing required to meet the needs of present and future generations; and by creating a high quality built environment, with accessible local services that reject the community's needs and support its health, social and cultural well-being; and
 - **an environmental role** – contributing to protecting and enhancing our natural, built and historic environment; and, as part of this, helping to improve biodiversity, use natural resources prudently, minimise waste and pollution, and mitigate and adapt to climate change including moving to a low carbon economy.
- 5.3 Carlton in Lindrick already has many sustainable attributes. With established schools, a range of recreational facilities and several local shops, the village enjoys a strong sense of community cohesion. Situated within easy reach of the facilities and services offered in Worksop yet still a village with a rural context and agricultural history, the community are keen to retain this character and protect its rural setting. There is also a desire to see the village grow in a balanced manner to meet the wider employment, recreational and social needs of a growing population.
- 5.4 When commenting on development proposals, the Parish Council will take a positive approach that reflects the presumption in favour of sustainable development. The Parish Council will work proactively with applicants to find joint solutions, wherever possible, to secure development that improves the economic, social and environmental conditions for the whole parish.



Policy 1: Sustainable Development

1. The Carlton in Lindrick Neighbourhood Plan will take a positive approach to development to ensure the parish fulfils the requirements of its residents and grows in a manner that recognises its rural context. New development, over the Plan period, will seek to maximise the environmental assets and opportunities in and around Carlton in Lindrick, by improving access to the countryside and the provision of new open spaces for residents and visitors.
2. Planning permission will be granted for development(s) where they can demonstrate that such development would support the continued sustainability of Carlton in Lindrick by providing or supporting:
 - a) Its role as a Local Service Centre;
 - b) new homes of a size, type and tenure to meet local needs as identified in the most recently published Strategic Housing Market Assessment
 - c) infrastructure associated with leisure, recreational pursuits and social community and educational activities in and adjoining the village;
 - d) an enhanced village centre that can meet the needs of the village's growing population.
3. All development shall be designed having regard to the policies and supporting evidence set out in this Neighbourhood Plan and shall be located to ensure that the development does not significantly and adversely affect the:
 - a) amenity of nearby residents; and
 - b) character and appearance of the area in which it is located;
 - c) historic environment;
 - d) settlement break and important views in the parish; and
 - e) social, built, historic cultural and natural assets of the parish.



6 Housing Development

- 6.1 Sustainable development is that of providing an appropriate mix of development that suits the needs of the local population where there is access to services, whilst minimising the impacts on the local environment and existing infrastructure.
- 6.2 As the plan area has seen considerable changes in the number of dwellings it has also witnessed associated changes on the traffic on local roads and the impact of the population growth on its services and infrastructure. These matters have featured heavily in the community consultation that has both underpinned and informed this Plan.
- 6.3 In addressing the future scale of the Plan area and the location and type of housing that would be appropriate the following principles have been applied:
- Seeking to ensure that new housing development sits appropriately in relation to the built-up settlement of Carlton in Lindrick;
 - Seeking to ensure that new housing development sits appropriately within its wider landscape setting and in relation to its proximity to and visibility from the Conservation Area;
 - Seeking to ensure that new residential developments appropriately contribute to meeting the needs of residents;
 - Seeking to ensure that new residential developments make appropriate and proportionate contributions towards the provision of new or improved local infrastructure;
 - Seeking to ensure that all new developments are located and designed to operate effectively within the local highway network and do not detrimentally affect the free and safe flow of traffic on the network; and
 - Seeking to ensure that the Plan area makes an appropriate and meaningful contribution to meeting the objectively-assessed housing needs of Bassetlaw District.

Assessing our general housing requirements

- 6.4 The Plan recognises its wider context within the existing Bassetlaw Core Strategy context. The Core Strategy was adopted in 2011 and stated that both Carlton and Langold should receive 4% growth (268 homes) through to 2031. This growth was projected to be delivered through existing planning permissions at that time.
- 6.5 The adopted Core Strategy however, pre-dated the introduction of the NPPF. On this basis, the District Council is now preparing a new Local Plan that will run for 15 years once adopted in 2020.
- 6.6 As the information provided by the Core Strategy is some 8 years old, the Parish Council is committed in guiding future developments and regeneration in the best possible locations as identified in the following policies.



Local Housing and accommodation Needs

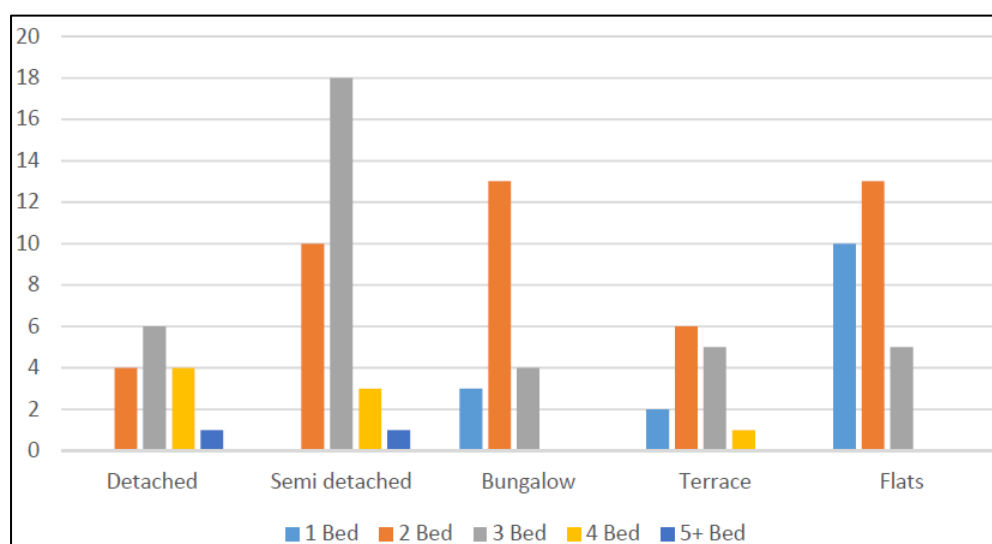
- 6.7 The community is anxious to ensure that all new housing developments fully respect the housing needs of the wider community. Whilst Carlton has grown significantly in the last fifty years or so, it has retained a strong sense of community spirit and cohesion. In this context many residents who moved to the village in the 1970s to 1990s are now both older and in need of smaller or more specialist housing. Their children are also finding it difficult to find appropriately sized or priced housing in the village and there has been a decline in the younger population as people seek cheaper housing and better employment prospects in other areas such as Worksop, Doncaster or Sheffield.
- 6.8 To understand the scale and significance of these issues, the Parish Council commissioned an independent 'Housing Needs Assessment' to undertake an analysis of current resident's needs over the plan period. Its report was published in February 2016. Its key findings of the type, range and size of housing required were as follows:

22% of respondents were interested in downsizing in the next 2-10 years.

The top two types of accommodation required were identified as:

- Semi-detached dwellings (2-3-bedroom); and
- 2-bedroom Bungalows

Preferred new housing types



- 6.9 The top three types of supported housing required were identified as:

- Independent accommodation with care support;
- Private sheltered housing;
- Housing Association Sheltered Accommodation.



7 Housing type and mix

- 7.1 Regarding the size of housing in Carlton in Lindrick, in relation to the number of bedrooms, most dwellings are three-bedroom units; these comprise approximately 57.7% of the current stock. This figure is higher than Bassetlaw District and the East Midlands with figures of approximately 49.5% and 45.4% respectively. Dwellings with four bedrooms comprises 13.2% of the current stock which is significantly lower than levels for the District and the East Midlands, whereas two-bedroom units comprise 17.4% of the current stock, a figure slightly lower than District and regional levels.
- 7.2 There are 2,474 properties in Carlton in Lindrick. The table below shows the number of property and the type of accommodation. The most prominent housing type within Carlton in Lindrick is semi-detached properties which comprise approximately 54.6% of the current stock; this figure is substantially higher than levels recorded for Bassetlaw District at 42.4%.

Table 3: Property Accommodation

	Carlton in Lindrick	Bassetlaw
Unshared dwelling:	98.0%	92.8%
Whole house or bungalow		
Detached	32.7%	34.0%
Semi-detached	54.6%	42.4%
Terraced (including end-terrace)	10.8%	16.4%
Flat, maisonette or apartment:	1.9%	6.8%
Purpose-built block of flats or tenement	1.4%	5.5%
Part of a converted or shared house (including bed-sits)	0.2%	0.7%
In commercial building	0.04%	0.6%

- 7.3 Within Carlton in Lindrick most of housing is owner occupied, this being split further into either owned outright, or owned with a mortgage or loan. The levels of housing owned outright in Carlton in Lindrick currently make up 40.3% of the current housing stock; this is significantly higher than Bassetlaw District. The levels of social housing that is rented from either the local authorities housing provider or from housing cooperatives or charitable trusts is 37.6 % which is higher than Bassetlaw.



Table 4: Property Tenure

	Carlton in Lindrick	Bassetlaw
Owned	72.6	69.5
Owned: Owned outright	40.3	34.2
Owned: Owned with a mortgage or loan	32.3	35.3
Shared ownership (part owned and part rented)	0.3	0.4
Social rented	18.8	15.9
Social rented: Rented from council (Local Authority)	17.3	12.9
Social rented: Other	1.5	3.0
Private rented	7.0	12.5
Private rented: Private landlord or letting agency	6.0	11.2
Private rented: Other	1.0	1.3
Living rent free	1.2	1.7



Figure 4: The distribution of Housing Association properties in Carlton in Lindrick



- 7.4 Carlton in Lindrick has a substantial older population which will continue to increase if current trends persist. The number of residents who are retired currently stands at 21.2%. This is



higher than the national figure which stands at 17.8% and it is slightly higher than that of Bassetlaw District of 20.9%. The table below identifies the rate of change amongst the population over the past 15 years.

Table 4: Local, regional and national age profile comparisons

Age group	Carlton-in-Lindrick	Bassetlaw	England
0-15	-17.8%	-6.2%	1.2%
16-24	-4.3%	15.4%	17.2%
25-44	-20.1%	-9.6%	1.4%
45-64	2.7%	15.6%	15.2%
65-84	20.2%	17.9%	9.1%
85 and over	74.4%	34.4%	23.7%

- 7.5 Through public consultation, people raised the issue of a lack of a mix of properties within new developments. Residents expressed views that additional accommodation for elderly people will be needed. This included a mix of private bungalows, sheltered accommodation and assisted care facilities.



Policy 2: Housing Type and Mix

1. Proposals for residential developments of more than 5 dwellings shall be expected to provide a mixture of dwelling types in accordance with the following:

- a) a mix that reflects the requirements set out in section 6.8, or more up to date evidence of housing needs; and
- b) provides a mix of affordable housing in accordance with the relevant adopted Bassetlaw District Council policy at the time.

2. Proposals for self-build units within the existing built form of Carlton in Lindrick will be supported.

Affordable Housing

- 1. Where local housing need data is available, reference shall be made in the application to how the proposed scheme meets that need.
- 2. Affordable housing shall be provided on site and must be fully integrated with the market housing throughout the development.
- 3. All new affordable housing in Carlton in Lindrick should be allocated based on local connection criteria meaning that people with a strong local connection to the village and whose needs are not met by the open market will be first to be offered the tenancy or shared ownership of the home. The local connection criteria shall prioritise as follows:
 - a) people who were born in Carlton in Lindrick and have lived there for 5 years or more; or
 - b) people who have lived in the area for 5 years or more people who used to live in Carlton in Lindrick but moved away due to lack of affordable housing; or
 - c) people permanently employed in the parish for 5 years or more.



8 Allocating Land for Development

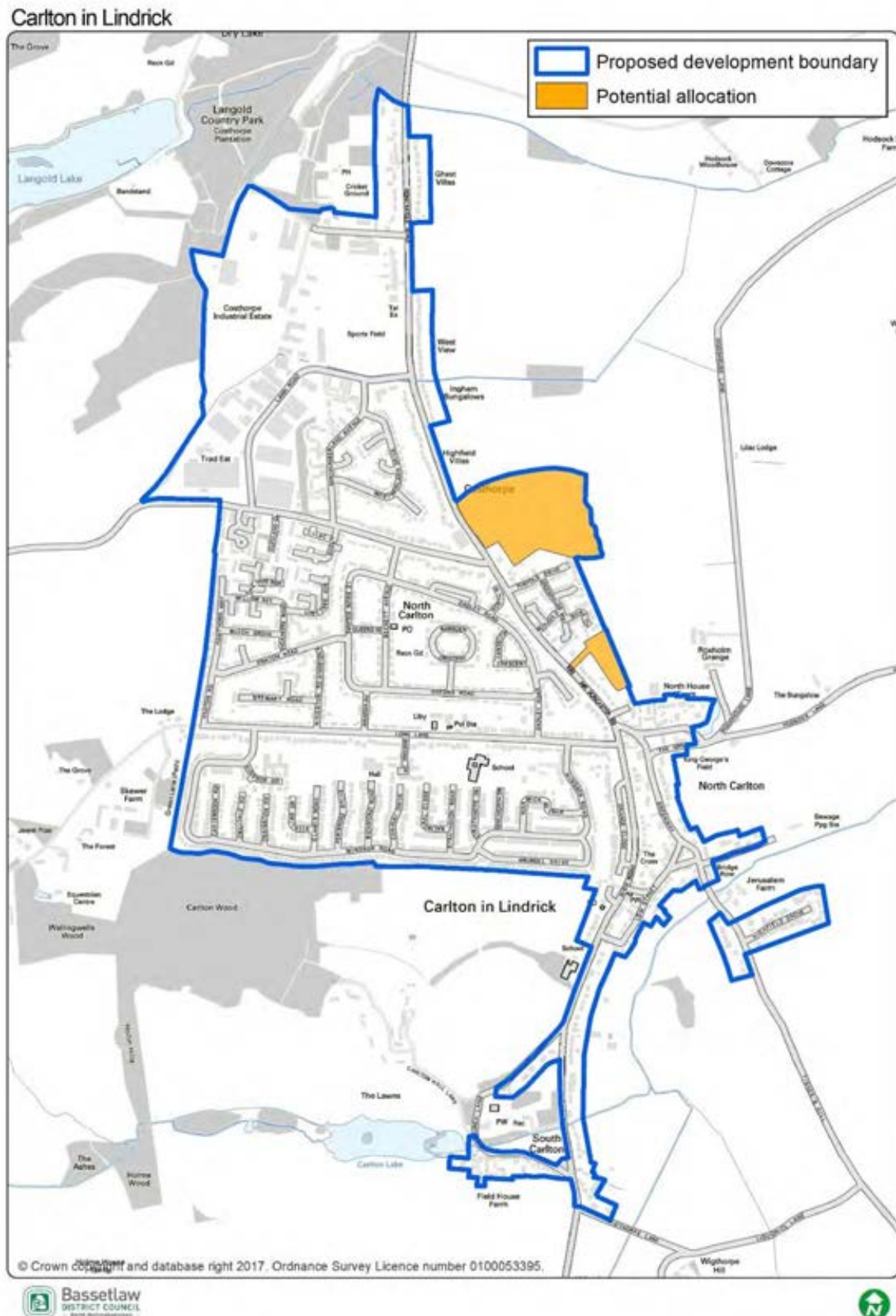
- 8.1 The Parish Council were keen to encourage development within the most appropriate locations. To achieve this, the steering group asked Bassetlaw District Council to provide the details of all the land that was submitted as part of the emerging Local Plan process late 2016. This consultation gave land owners, developers and the local community the opportunity to submit land to be considered for future allocation.
- 8.2 In October 2017, the Neighbourhood Plan group, along with Bassetlaw District Council, undertook an assessment of each site through an agreed site assessment criterion (which can be viewed in Appendix 2).
- 8.3 The sites were scored according to their availability and suitability. Sites that scored negatively were immediately discounted and only the sites that were considered suitable for development were taken forward as proposed allocations.
- 8.4 The community played a significant role and the site assessment criteria included the level of community support. An event was held within the Civic Centre during October 2017 where over 150 people attended to 'have their say' on the proposed sites.
- 8.5 The information identified within the site assessment is also supported by a draft Sustainability Appraisal which looks at whether there could be negative impacts to the environment by the proposed Neighbourhood Plan.
- 8.6 In addition, there are several existing planning permissions within the parish of Carlton in Lindrick, some of which are allocated within this Plan.

Table 5: Existing Planning Permissions and potential allocations in Carlton in Lindrick (sites over 10 units)

<i>Site name</i>	<i>Permitted units through existing planning permissions</i>	<i>Additional units through the Neighbourhood Plan</i>
Firbeck Colliery	350	50
Peppers, Blyth Road	180	0
Doncaster Road	0	150
Land at Highfield House	0	10
Total	534	200
Overall Total	744	



Proposals Map: Settlement Boundary and Allocations

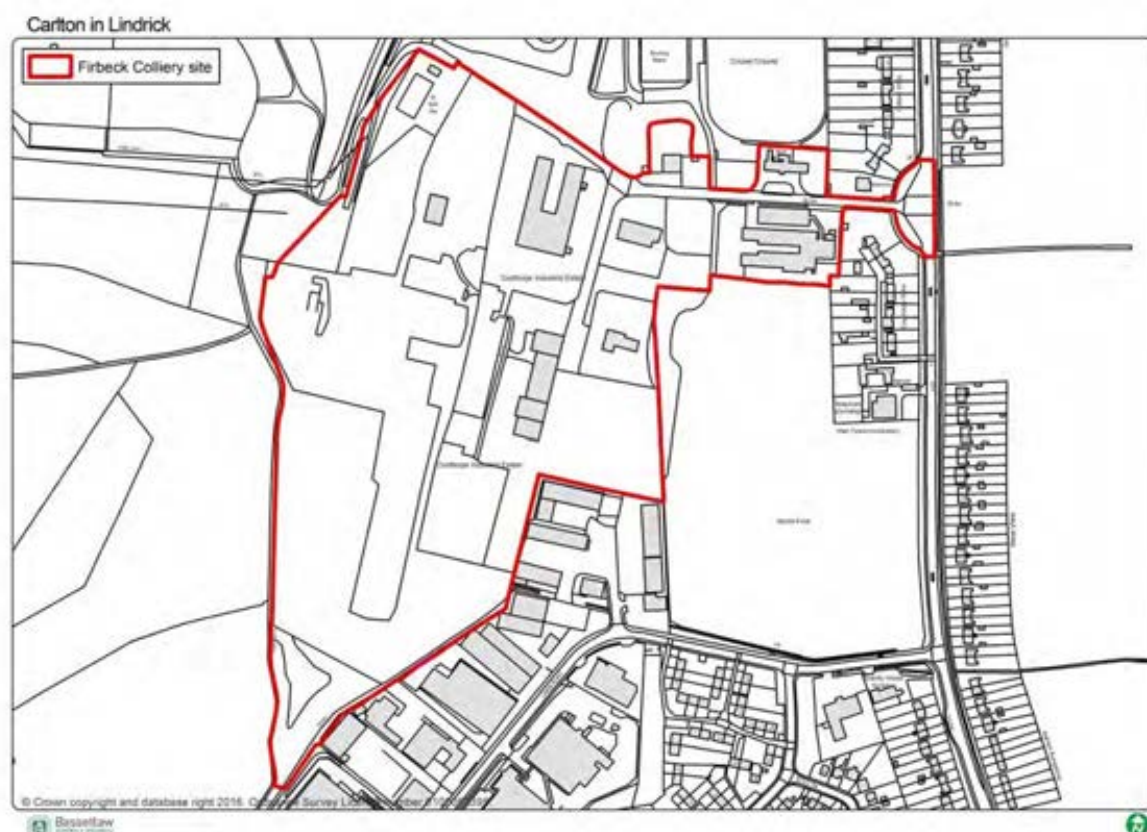




9 Firbeck Colliery – Site 1

- 9.1 Firbeck Colliery site lies to the north of the parish and adjacent to the neighbouring parish of Langold. The site covers 2.5 hectares and is near nearby services and facilities linked by a series of footpaths and the main A60/ Doncaster Road.
- 9.2 The site has been vacant for over 40 years and has been the main emphasis for redevelopment within the area. The District Council has identified this site as the focus for housing development and regeneration over the period of the Local Development Plan.
- 9.3 The site has been subject to various planning permissions but, due to viability, there has been no delivery of this development and the site remains vacant and disused.
- 9.4 During the public consultation, it became clear that the community strongly support the redevelopment of this site to become a well-integrated part of the community. This Neighbourhood Plan supports this view and allocates the site as the focus for development and regeneration of its plan period. The development is expected to contribute towards the regeneration of the site and wider settlement by improving the site environmentally, and providing a suitable range of property types and tenures to support a sustainable community.

Map 1: Firbeck Colliery Development Site





Policy 3: Allocation of land at Firbeck Colliery (Site 1)

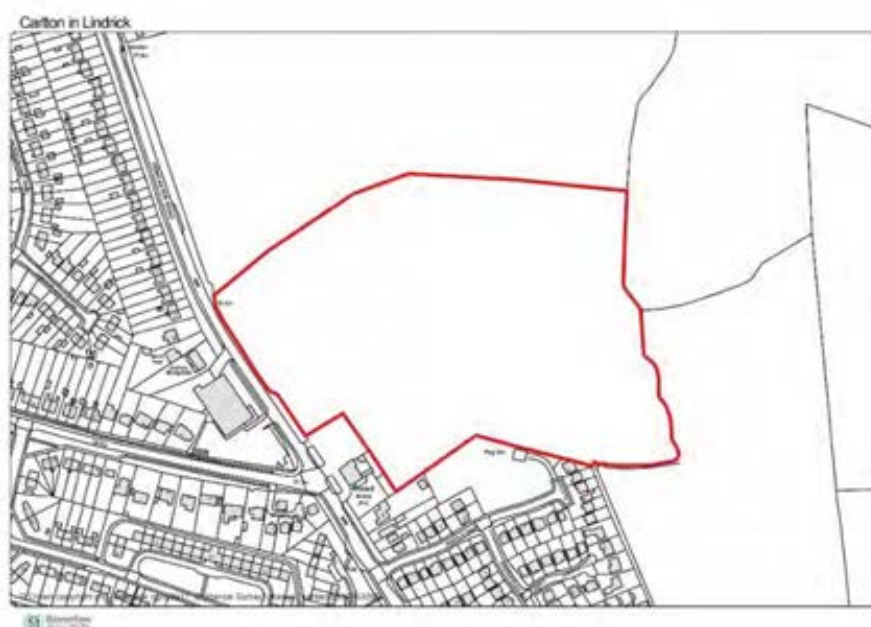
1. The site, as identified on map 1, is allocated for residential use. The Neighbourhood Plan is supporting, in the region of, 400 new homes and open space(s) to support sustainable development and promote community cohesion. Proposals for development on this allocation will be supported where they can satisfactorily demonstrate, to the Local Planning Authority, that any proposal will not have a detrimental impact on the following issues raised by the local community, including:
 - a) improving access to and from Langold Country Park and Carlton in Lindrick; and
 - b) existing highway network on to Doncaster Road; and
 - c) existing capacity of the local primary schools and health centres; and
 - d) improving local character and distinctiveness.
2. Proposals shall contribute towards the achievement of a new, and well-integrated, sustainable neighbourhood. Any proposal must consider the following:
 - a) vehicular access to the site shall be from Doncaster Road only;
 - b) existing boundary trees and hedgerows shall be retained, (other than those required to achieve site access) and shall be reinforced with native species;
 - c) the layout and design of the scheme shall include trees, in both the communal and private amenity areas, to reflect the green rural character of this part of the village;
 - d) the layout, building forms and design shall have regard to nearby dwellings;
 - e) access shall be created, or existing connections enhanced, from the development site into Langold Country Park and, where possible, to other parts of the village to integrate the development with the rest of the village. Particularly between Owday Lane and the Country Park;
 - f) the provision of any public spaces shall be easily accessible to all and provide a usable area of recreation and amenity;
 - g) provide an appropriate level of off-street residents and visitors parking that is integrated into the wider scheme to avoid any unnecessary on-street parking;
 - h) provide an appropriate mix of housing types and tenures, including affordable housing, that shall help meet the needs of the local community, as identified in policy 2;
 - i) where appropriate, incorporate suitable drainage and flood mitigation measures through Sustainable Urban Drainage Systems.



10 Doncaster Road – Site 2

- 10.1 Site 2 – Land East of Doncaster Road lies to the east of the village of Carlton in Lindrick. The site covers 2.1 hectares and is near nearby services and facilities linked by neighbouring residential areas and footpaths along the main A60/ Doncaster Road.
- 10.2 The site is currently an agricultural area of land bounded by hedging and residential properties to the South.
- 10.3 As part of the Neighbourhood Planning process, land around the Parish was considered to accommodate future growth. The Neighbourhood Plan Site Allocations Report identified this site a “suitable” for future development due to few planning constraints and the availability of nearby infrastructure.
- 10.4 During the public consultation, it became clear that community had several concerns regarding the large site being entirely developed. The concerns voiced were mainly issues regarding infrastructure capacity, loss of agricultural land, loss of wildlife, impact on the existing landscape and views across the Ryton Valley.
- 10.5 As part of the site allocation process, it was agreed that developing the large site would have a detrimental impact on the issues raised by the community and a smaller area should be considered.
- 10.6 This Neighbourhood Plan supports this view and allocates a part of the original site as the focus for development. The development is expected to contribute towards providing a range of new homes and infrastructure for the wider community over the plan period.

Map 2: Allocation of Land East of Doncaster Road





Policy 4: Allocation of land at Doncaster Road (Site 2) Site Allocations Ref LAA0076))

1. The site, as identified on map 2, is allocated for residential use. The Neighbourhood Plan is supporting, in the region of, 150 new homes and open space(s) to support sustainable development and promote community cohesion. Proposals for development on this allocation will be supported where they can satisfactorily demonstrate, to the Local Planning Authority, that any proposal will not have a detrimental impact on the following issues raised by the local community, including:
 - a) residential privacy and amenity to existing properties along Pinfold Drive; and
 - b) existing highway network on to Doncaster Road; and
 - c) local environmental assets and identified “important views” on, through, or adjacent to, the site – notably Local Green Space 5; and
 - d) existing capacity of the local primary schools and health centres.
2. Proposals shall contribute towards the achievement of a new, and well-integrated, sustainable neighbourhood. Any proposal must consider the following:
 - a) vehicular access shall only be provided off Doncaster Road;
 - b) provide pedestrian access to LGS 5 off Pinfold Drive;
 - c) the height and scale of new properties adjacent to the existing properties along Pinfold Drive. No building shall be higher than two storeys in height;
 - d) mitigate any loss of local biodiversity and wildlife that may be affected by the proposal by providing green spaces that will help the enhancement of local wildlife habitats;
 - e) take advantage of local topography, landscape views, native trees, hedgerows and site orientation;
 - f) appropriate boundary treatments and screening through the creation of a 10 metre “green, landscaped buffer” between the development site and the open countryside to the north and east of the site between the site and those existing properties on Pinfold Drive;
 - g) provide an appropriate level of “usable” public open space that should take opportunities to connect to existing spaces, footpath networks and local facilities;
 - h) provide an appropriate level of off-street residents and visitors parking that is integrated into the wider scheme to avoid any unnecessary on-street parking;
 - i) provide an appropriate mix of housing types and tenures, including affordable housing, that shall help meet the needs of the local community, as identified in policy 2;
 - j) where appropriate, incorporate suitable drainage and flood mitigation measures through Sustainable Urban Drainage Systems.
 - k) Provide a Transport Assessment to demonstrate suitable access and movement to and from the development site.



11 Land behind existing homes at Doncaster Road – Site 3

- 11.1 Site 3 – Land behind Doncaster Road lies to the east of the village of Carlton in Lindrick. The site covers 2.1 hectares and is near nearby services and facilities linked by neighbouring residential areas and footpaths along the main A60/ Doncaster Road.
- 11.2 The site is currently a redundant area of land bounded by hedging and residential properties to the west and south.
- 11.3 As part of the Neighbourhood Planning process, land around the Parish was considered to accommodate future growth. The Neighbourhood Plan Site Allocations Report identified this site a “suitable” for future development due to few planning constraints and the availability of nearby infrastructure such as the highway network.
- 11.4 During the public consultation, it became clear that community had several concerns regarding the large site being entirely developed. The concerns voiced were mainly issues regarding access to the existing road network and impact on traffic congestion.
- 11.5 As part of the site allocation process, it was agreed that developing the site would have a detrimental impact on the issues raised by the community and a “cap” on the number of properties should be considered.
- 11.6 The development is expected to contribute towards providing a range of new homes and infrastructure for the wider community over the plan period.

Map 2a: Allocation of land behind existing properties along Doncaster Road





Policy 5: Allocation of land at Doncaster Road (Site 3) Site Allocations Ref LAA00162))

3. The site, as identified on map 2a, is allocated for residential use. The Neighbourhood Plan is supporting, in the region of, 10 new homes to support sustainable development and promote community cohesion. Proposals for development on this allocation will be supported where they can satisfactorily demonstrate, to the Local Planning Authority, that any proposal will not have a detrimental impact on the following issues raised by the local community, including:
 - a) residential privacy and amenity to existing properties along Doncaster Road; and
 - b) adversely impacting the existing highway network on to Doncaster Road; and
 - c) existing capacity of the local primary schools and health centres.
4. Proposals shall contribute towards the achievement of a new, and well-integrated, sustainable neighbourhood. Any proposal must consider the following:
 - a) vehicular access shall only be provided off Doncaster Road;
 - b) the height and scale of new properties adjacent to the existing properties along Pinfold Drive. No building shall be higher than two storeys in height;
 - c) mitigate any loss of local biodiversity and wildlife that may be affected by the proposal by providing green spaces that will help the enhancement of local wildlife habitats;
 - d) provide an appropriate level of off-street residents and visitors parking that is integrated into the wider scheme to avoid any unnecessary on-street parking;
 - e) provide an appropriate mix of housing types and tenures, including affordable housing, that shall help meet the needs of the local community, as identified in policy 2;
 - f) where appropriate, incorporate suitable drainage and flood mitigation measures through Sustainable Urban Drainage Systems.
 - g) Provide a Transport Assessment to demonstrate suitable access and movement to and from the development site.



12 Residential Infill Development Opportunity

- 12.1 It is possible that, over the Plan period, sites within the existing village will come forward for development. The cumulative effect of this can change the character of the area.
- 12.2 Limited infill development may be acceptable within the built-up area of the village provided it preserves the character of the village. Regard should be given to the scale and character of the area when assessing development proposals.
- 12.3 Not all gaps are appropriate for infilling. Early on in this neighbourhood plan process the community identified the protection of green spaces as a key issue. Part of the character of Carlton in Lindrick is the open spaces and other breaks between buildings that exist due to the scale and massing of existing properties. Infill development will not be desirable if it erodes the historic character of the village.
- 12.4 Given the local need for smaller market properties, downsizing for an ageing population and the likelihood that some of these sites may be in the centre of the village close to local amenities, some infill development may be appropriate.
- 12.5 Smaller dwellings - suitable for older people or those with mobility issues will be particularly supported in the village. Equally, smaller properties in the centre of the village would also be suitable for young people looking to own or rent their first home.



Policy 6: Residential Infill Development

1 Residential development on infill and redevelopment sites, including the conversion of suitable buildings, will only be supported where the proposals meet all the following criteria;

- a) the scheme is located within the existing settlement footprint** of Carlton in Lindrick; and
- b) the scheme is in-keeping with the character of the area, particularly in relation to historic development patterns and building plot sizes; and
- c) the scheme does not detract from the setting of a Listed Building, Conservation Area or an identified non-designated heritage asset (see Conservation Area Appraisal); and
- d) building lines and boundary treatments should reflect the positive characteristics of the area; any planting shall include native species; and
- e) the scheme is small in scale, unless it can be demonstrated to the District Council's satisfaction that a higher number, perhaps due to dwelling size, would not cause material harm to the character of the area.

2 Proposals that include smaller dwellings (2-3 bedrooms), including self-build units, on infill sites that are within a safe walking distance from local facilities shall be encouraged.

**** The development footprint of a settlement is defined as the continuous built form of the settlement and excludes:**

- a) Individual buildings and groups of dispersed or intermittent buildings that are clearly detached from the continuous built-up area of the settlement;*
- b) Gardens, paddocks, and other undeveloped land within the curtilage of buildings on the edge of the settlement where land relates more to the surrounding countryside than to the built-up area of the settlement; and*
- c) Agricultural buildings and associated land on the edge of the settlement.*



13 Employment and local business

- 13.1 A key part of the approach adopted in this Plan is to secure the long-term sustainability of Carlton and the wider parish. In recent years several major businesses have closed and Carlton in Lindrick has lost some of its service and facilities. The community are now looking to the future and recognise that the national and local economies are changing.
- 13.2 Although there are employment opportunities and a low unemployment rate, it has been highlighted that the parish is affected by a low wage economy and this is continuing to cause issues with affordability and issues with people leaving the area to find higher paid employment and a lack of new businesses coming to the area.
- 13.3 This section of the Plan sets out to provide a positive context within which businesses can established and grow within the parish.
- 13.4 In addition, it is also recognised that to support the local economy, there must be investment in training and improving the local skill base. It is important that new developments for employment encourage the diversification of the local skill base and where possible seek to improve this through training programs and working with the local education authority and nearby education establishments.
- 13.5 Carlton has two distinct areas of employment land¹ identified within the Bassetlaw Core Strategy. These are Lawn Road industrial estate and Carlton Forest industrial estate between Carlton and Worksop. They offer a wide range of employment including light industry, storage and distribution.
- 13.6 In addition, the village has two small Neighbourhood Centres (providing more retail employment) within the Core Strategy that seek to preserve, within Core Strategy policy CS5 – Carlton in Lindrick and Langold, the retail and community facility presence within these areas.
- 13.7 Other employment sectors are available in the area including, employment within the agricultural, the local tourism, hospitality and retail sectors which are adequately covered within Core Strategy.
- 13.8 There is also an element of small businesses such as local cottage industries and home working which is something this neighbourhood plan seeks to encourage.
- 13.9 It is estimated that Carlton in Lindrick provides around:
- 50 home working jobs
 - 250 ancillary jobs

¹ Lawn Road Industrial estate and Carlton Forest industrial estate.



- 175 jobs in light manufacturing

13.10 These businesses provide both employment and a wider community and social function. This section includes a positive policy to support the development of new businesses in the Plan area. In accordance with the approach set out in the NPPF, support will be given to the following enterprises and projects:

- business proposals that support the sustainability of the Plan area and involve the sensitive conversion of existing buildings and the development of well-designed new buildings.
- proposals that promote the development and diversification of agriculture and other land based rural businesses.
- proposals that support sustainable rural tourism and leisure developments that benefit businesses in rural areas, communities and visitors.

13.11 The business community recognises the importance of high speed Broadband access within the Plan area. It will assist existing local businesses to prosper. It will also provide further opportunities for the establishment of businesses for persons working from home.

13.12 The business community also recognises the importance of smaller businesses in sustaining the vitality and viability of the community during the working day and in reducing the levels of commuting to nearby larger towns and cities. In some cases, businesses operating from the owner's home do not need planning permission.

13.13 During the consultation period, some of the comments received from the residents were as follows:

"All additional employment opportunities should be promoted."

"All warehousing and distribution should be kept away from the village."

"An area for small technology companies to set up starter business."

"Any [employment opportunities] would be welcomed. Local businesses should be attracted to the areas with local people employed."

"More jobs will boost the local economy. Without jobs Carlton will become a place to live rather than a community."

13.14 The response to the community questionnaire showed that two thirds of residents that responded were in favour of further employment opportunities being developed in the parish and was followed up with a question seeking to understand the community's views on the type of business development that they considered appropriate for the area, ranging between Office, Retail, Manufacturing, Agriculture and Storage/ Distribution.



13.15 At the time of producing this Neighbourhood Plan, a large employment development has been granted outline planning application on the edge of the parish adjacent to the built-up area of Worksop along Thievesdale Lane. The proposal is significant in providing local jobs and encouraging apprenticeships and training opportunities with North Nottinghamshire College in Worksop.

Policy 7: Enabling Employment Opportunities

1. Proposals that generate new business and employment opportunities, shall be subject to all the following criteria:

- a) the proposal is located within, or directly adjacent to, the existing built up area of Carlton in Lindrick or on, or directly adjoining, the two identified areas of employment; Lawn Road and Hundred Acre Lane; and
- b) the proposal respects the character and appearance of the immediate locality in terms of its height, scale, design and massing; and
- c) the proposal does not cause an unreasonable impact from noise, smell, vibrations, glare and dust on the amenity of nearby residential properties; and
- d) the proposal provides adequate off-road parking, servicing and access arrangements in accordance with the most recently published standards by Bassetlaw District Council.

2. Proposals that support the employment of local people within Carlton in Lindrick and supports improving and diversifying local skills, through further education, apprenticeships and training, will be strongly supported.

Rural Diversification in the open Countryside

3. Proposals for rural enterprise, including farm diversification, shall be supported provided that:

- a) the rural location of the enterprise is justifiable to maintain or enhance the rural economy or the location is justified by means of proximity to existing established businesses or natural features; and
- b) the location of the enterprise is suitable in terms of accessibility; and
- c) the location of the enterprise would not result in conflict with neighbouring land uses; and
- d) the development is of a size and scale commensurate with the proposed use and with the rural character and location.



14 Design Principles

- 14.1 To design successful places, all new development should meet the aspiration for quality and sustainability in their design and layout. In short, good design is inseparable from good planning and place making.
- 14.2 High quality sustainable design is design that is of a notable standard, which, by its nature, will sustain over the longer term, is adaptable, and it is fit for purpose in the 21st Century.
- 14.3 A fundamental part of achieving high quality sustainable design, and ultimately high quality sustainable places, is the need to develop a thorough understanding of the local character and the qualities that contribute to local distinctiveness.
- 14.4 All new development must make a positive contribution to the character and appearance of the environment within which it is located, having regard to its local context, and should not impact negatively upon the amenity of the local community.
- 14.5 It is important to consider development proposals on their merits and on a case-by-case basis according to what they are proposing. The purpose of this policy is to establish what aspects or features of local character are considered important and contribute towards the local distinctiveness of either the vicinity of a proposed development site, or in the context of the wider neighbourhood area.

Character and Distinctiveness

- 14.6 Carlton in Lindrick was, historically, a linear settlement, with built form sitting shallow to the main lines of movement, and with the village core clustering around the junction between Doncaster Road and Greenway. The lanes that run to the east do so along local depressions, with Hodsock Lane cutting against the gentle slope in the landform. North Carlton was built to provide accommodation for the local Coal Mine; Firbeck Colliery through the Mid-20th Century. The development of this area created a large extension to the existing historic part of the village and identifies more with an urban settlement structure – like those in other former mining communities.
- 14.7 The shape of the historic settlement in South Carlton is tightly associated with the underlying topography, the linear form being a direct result of the shape of the underlying landform.
- 14.8 This gives rise to a pattern with two distinct aspects; linear, ribbon development along what can be termed 'global integrators', this is streets that link beyond the settlement to the wider area, and nucleated development for the newer part of the village that has a deformed grid of interconnecting streets, but not streets that link beyond the local area.
- 14.9 One area that breaks the settlement pattern in an unusual way is the much newer development east of Doncaster Road, taking in Pinfold Drive, Greenfields Way and Plough



Drive etc. Here, the streets still align with the topography in a similar way to streets in the rest of the settlement, but the location is unusual, with housing extending deeper into the open countryside to the east and development sitting entirely to this side of the Doncaster Road.

- 14.10 The local topography shows that the development here occupies something of a plateau, with the land falling away more sharply from the Doncaster Road the further north you go. Indeed, development along the eastern side of Doncaster Road only occurs in places that are within 5m AOD of the level of the main street, which helps explain the gaps in development noted in the previous section. This gives a strong rationale in retaining these gaps; they are integral to the character of the settlement as they express how the settlement relates to the local topography.
- 14.11 The existing built up area of Carlton in Lindrick takes in a tightly confined, relatively new area of housing clustered to the west of the Doncaster Road and the old historic village, now a conservation area - that shows remnants of being a linear settlement.
- 14.12 Industrial development can be seen on the north-western edge of the village, to the back of Rotherham Baulk. Functionally, the area of Costhorpe falls within the settlement, as it has coalesced with the main settlement to the south. Further along Doncaster Road, sporadic runs of housing can be found, and these were probably originally associated with the industrial development to the west.
- 14.13 The southern extent of the settlement is tightly bound to the rear gardens of the houses on Windsor Road, and beyond that are fields and woodland. To the west, some farm buildings can be found extending into the open countryside but again, the main settlement stops abruptly along the back edge of houses to Knaton Road and Windsor Road as it loops northwards.
- 14.14 A key characteristic of places, often overlooked, is the role that street geometry and forward visibility has in helping to distinguish one place from another. Some villages are characterised by their narrow, winding lanes and compact feel, whilst others offer long views along their streets.
- 14.15 Long Lane and Rotherham Baulk show up as having good sight lines and this helps users understand that these are important for getting in and around the village. Back streets such as Richmond Road or Willow Avenue have the shortest sight lines, denoting their local rather than global function.
- 14.16 In this way, a pattern emerges; long sight lines are to be found on streets that take you either to other places entirely or to other parts of the village, very short sight lines denote only local movement. This is an important element for understand street character in Carlton in Lindrick.



14.17 Carlton in Lindrick is home to a large conservation area, comprised of six different character areas. Most of the conservation area is open space associated with the great halls and large houses found here, although there are also dense areas of historical built form plus a village green.

Map 3: Heritage Assets



14.18 An aspect covered in detailing within the **Conservation Area Appraisal**,² prepared by Bassetlaw District Council, is the role of geology and landscape in influencing the settlement form, supporting many of the observations made in the previous section of this report relating to how newer parts of the village relate to their underlying landform.

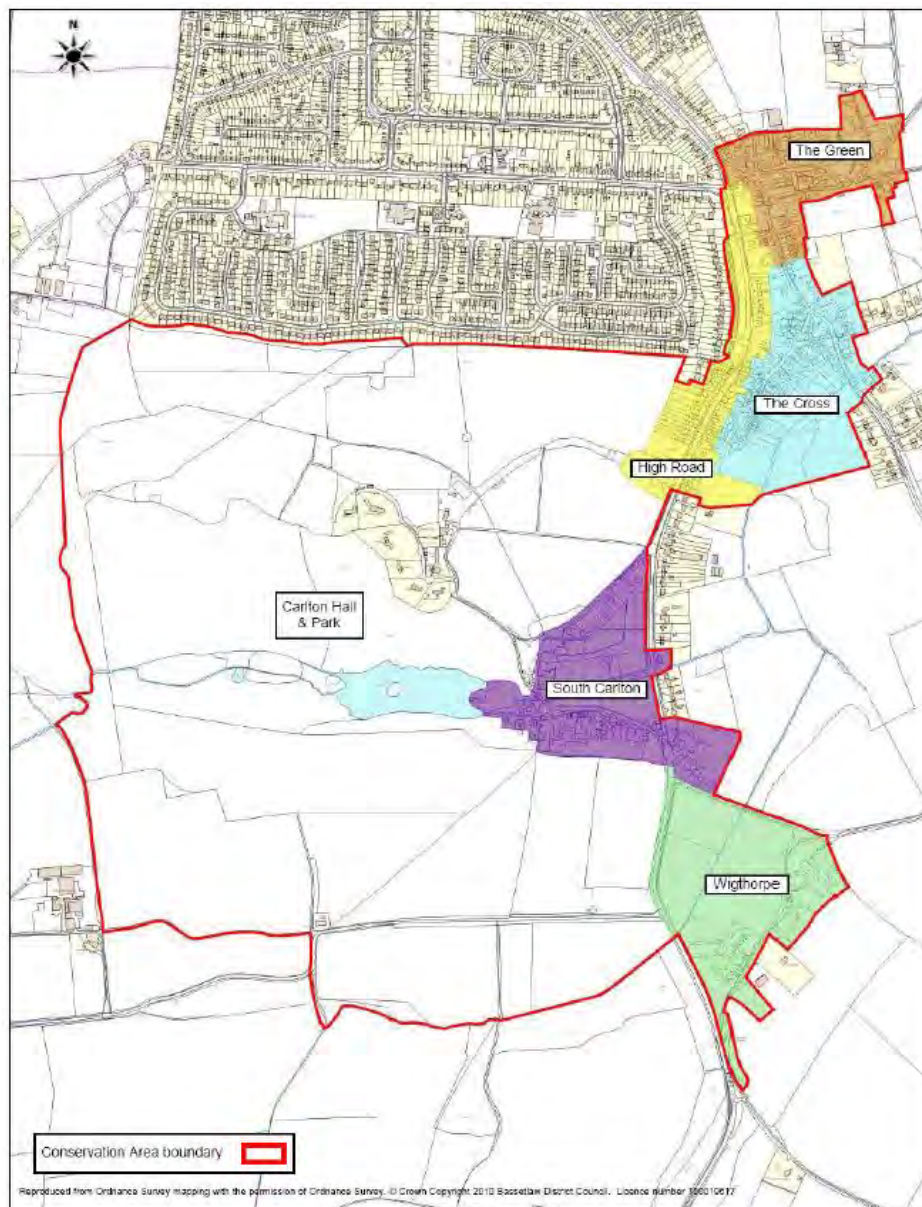
14.19 The character areas within the conservation area appraisal demonstrate the importance of repeated elements in helping to generate a coherent built environment; too much variation or no unifying features would make it impossible to define character areas or manage them in a clear way; this is an important lesson for new development should it occur, and designers are encouraged to think about creating the conservation areas of tomorrow. It may be that

² <http://www.bassetlaw.gov.uk/everything-else/planning-building/conservation-heritage/conservation-areas.aspx>



elements of the conservation area can be embedded within new development and used to anchor additions to the village to the overall character of the area.

Map 4: Conservation Area Character Areas



14.20 The Conservation Area Appraisal identifies the unique and important characteristics of each character area and provides a 'summary of special interest' to inform developments of the locally important issues to consider when preparing a planning application.



Policy 8: Development and Design Principles

1 All new development must achieve high quality design that contributes positively to the local landscape and townscape, and supports equality and adaptability for future changing needs. Development proposals shall demonstrate how they have considered the following design principles:

- a) development shall complement and be well integrated with neighbouring properties in the immediate locality in terms of scale, density, massing, separation, layout, materials and access;
- b) architectural design shall reflect high quality standards and, where possible, reflect local design references in both the natural and built environment and reflect and reinforce local distinctiveness;
- c) the height of new buildings shall be in-keeping with the height of neighbouring properties and demonstrate how heights of the development will not be over-bearing or dominant in the existing street-scene. No residential developments shall be over two-storey in height;
- d) development shall seek to retain existing mature hedging and established trees to provide for biodiversity. Any existing mature trees or hedging that are unavoidably removed, shall be replaced elsewhere on the site;
- e) development shall consider, and where possible, retain or enhance any “important” views, as identified on map 6, both within the settlement and out towards the open countryside;
- f) development affecting the transitional edges between the existing built up settlement of Carlton in Lindrick and the open countryside shall be softened by native landscaping or the inclusion of public open space to complement the character of the adjacent or surrounding countryside;
- g) parking on development sites shall provide adequate off-street parking spaces to avoid clutter and unnecessary on-street parking. Where on-street parking forms part of a developments design, it shall be appropriately designed into the street-scene by the provision of parking bays or areas to avoid unnecessary on-street parking and traffic congestion;
- h) where a development is providing garages, these shall be large enough to accommodate a modern family sized car;



- i) there will be a presumption against development, alteration, advertising or demolition that will be detrimental to the significance of a heritage asset, including those identified as non-designated heritage assets;
- j) the setting of an asset is an important aspect of its special architectural or historic interest and proposals that fail to preserve or enhance the setting of a heritage asset will not be supported. Where appropriate, regard shall be given to any approved characterisation study or appraisal of the heritage asset.
- k) Where appropriate, proposals shall provide open space, sport and recreation uses that:
 - a) are accessible and inclusive to all;
 - b) Safeguard and enhance the natural environment;
 - c) Conserve and enhance any designated and non-designated heritage assets.
- l) the siting and layout of open space, within new developments, will be key to connecting existing and new communities to the existing green infrastructure network and adjoining countryside.
- m) where appropriate, Sustainable Urban Drainage Systems shall be integrated into the wider public open space and provide an easily accessible area for informal recreation and amenity.



Policy 9: Carlton in Lindrick Conservation Area

1. Development within the Carlton Conservation Area and its setting, including alterations and extensions to existing buildings, will be supported, if it is in accordance with other statutory and local plan policies and the following principles:
 - a) development shall be designed to sustain significant views that contribute to the character and appearance of the Conservation Area. These views include (but not limited to) the “important historic views” as shown in Appendix 3 and applications shall include an assessment of the impact of the proposal on the positive qualities of such views, explaining the rationale of design choices used;
 - b) development shall respect existing plot boundaries, ratios and the historic or traditional forms and grain of development;
 - c) developments shall respect the predominantly materials used in the area, which consist of either local Magnesian Limestone or red brick with clay pantiles or natural slate;
 - d) existing green spaces, including private gardens, shall be protected from unsympathetic development where this would have an adverse impact on the spacious character of the existing site and the area;
 - e) developments shall take inspiration from the existing predominant boundary treatments appropriate to the immediate buildings and wider character of that part of the Conservation Area;
 - f) development that affects positive buildings (as identified on map 3) and their positive contribution to the street-scene must not undermine the significance of that contribution;
 - g) proposals to demolish positive buildings (as identified on map 3) will be resisted.



15 Settlement Break

- 15.1 Beyond the village, much of the designated Plan area is open countryside. This aspect of siting within the landscape is a key component of both the character of the village and of the quality of life that the residents enjoy. A key concern of the community is the coalescence of existing settlements of Carlton in Lindrick and Langold, the subsequent loss of green space and the damage this might do to the identity of what are currently two distinct places. This became a significant issue during consultation feedback and talking to residents.
- 15.2 This includes the long views currently enjoyed from the Doncaster Road across the Ryton Valley, which are a memorable part of the character and experience of the village. This section examines the settlement break that acts to provide a valuable amenity for residents, that connect the village to green spaces and features in the wider area, and which help preserve the village as a distinct place with its own character. These green connections are important wildlife corridors, and provide space for biodiversity and ecology to thrive.
- 15.3 The role of the settlement break in supporting the character of Carlton in Lindrick is set out below, and risks to the essential role of these spaces are identified to suggest ways in which these essential green spaces can be protected from erosion over time.

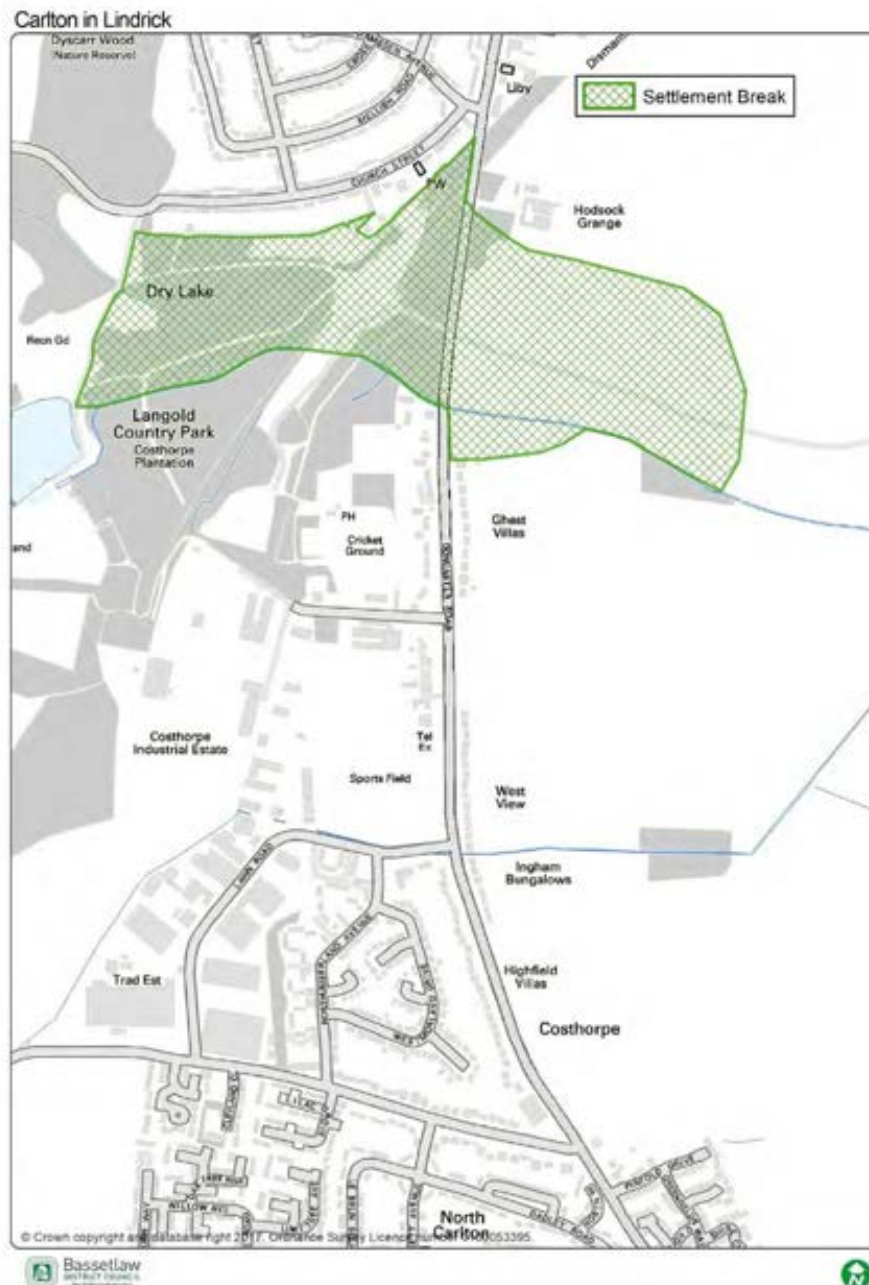
1 Settlement Break between Carlton in Lindrick and Langold

- 15.4 For settlements to maintain a distinctive character, it is important to avoid coalescence, especially if the built environment is distinct between the two places. The northern fringe of Carlton in Lindrick is distinct from the built environment of Langold, with linear development of detached and semi-detached dwellings fronting the street.
- 15.5 Langold is very different, with a more urbanised feel along Doncaster Road, including a local centre. The separation between the settlements helps to manage this transition in character, so that as you pass through the area you get the feeling of moving between distinct places.
- 15.6 This break also helps in bringing the role of the underlying landform in influencing settlement formation to the fore, as here there is a distinct local depression that reveals the spatial logic of how the settlements came to be formed in the first place. Within this local dip, watercourses feed Langold Lake and a system of ditches drains the land into the Ryton valley beyond.
- 15.7 The eastern extent of Langold Country Park is visible from the street as you pass through this break, and this gives this segment of Doncaster Road a distinct character, with dense woodland tree planting right up to the edge of the movement corridor. This creates a tunnelling effect, which contrasts with the more open feel of the Doncaster Road to the south. This openness is one of the key characteristics of Carlton in Lindrick and one of the things that makes it distinct from other settlements along the A60 in this area.



- 15.8 The integrity and character of this break should be preserved as it is an important part of the user experience of visiting the area, helping to keep Carlton in Lindrick and Langold two distinct places and offering a connection from the street to the country park and beyond.
- 15.9 Development within this break should be resisted so as not to harm the role this space has in supporting the feel of distinct settlements.

Map 5: Settlement Break





Policy 10: Settlement Break – Land between Carlton in Lindrick and Langold

1. The settlement break, as identified on map 5, has been identified to fulfil the following role and functions:
 - a) Prevention of the physical merging of Carlton in Lindrick and Langold, preserving their separate identity and local character; and
 - b) Creation of a “green lung” to offer residents a direct and continuous link to the open countryside and Langold Country Park; and
 - c) Provision of an accessible recreational resource, with both informal and formal opportunities, close to where people live.
2. Within the identified settlement break, planning permission will not be granted for any form of development, unless:
 - a) It can be demonstrated that the development is not contrary or detrimental to the above functions and aims; or
 - b) It is essential for the proposed development to be located within the settlement break, and the benefits of which override the potential impact on the settlement break.
3. Development proposals within the settlement break will be expected to have regard to:
 - a) The need to retain the open and undeveloped character of the settlement break, physical separation between Carlton in Lindrick and Langold, historic character and environmental significance; and
 - b) The maintenance and enhancement of the network of footpaths and their links to the countryside, to retain and enhance public access, where appropriate to the role and function of the settlement break.
4. Development proposals directly adjoining the settlement break will be expected to demonstrate that:
 - a) They do not adversely impact on the function of the settlement break, considering scale, siting, design, materials and landscape treatment; and
 - b) They have considered linkages to, and enhancements of, the adjacent settlement break.



16 Important Views along Doncaster Road

- 16.1 One of the key features of Carlton in Lindrick is its relationship with its wider landscape setting and the long views over the Ryton Valley that can be found when moving through the village.
- 16.2 The green gaps in around the area are integral to the character of the village, serving to both bring the countryside into the more built up areas and as important wildlife corridors that connect habitats and spaces in the wider landscape. They also help to keep Carlton in Lindrick as a distinct settlement, allowing it to have its own sense of place and providing easily accessible amenity space for residents and visitors.
- 16.3 Managing these spaces in a way that does not critically weaken this important set of functions is paramount in the maintenance of the identity of the area; any new development within these gaps will have to be carefully designed to avoid damaging these spaces, and it may be prudent to keep development away from these spaces all together unless it can be adequately demonstrated that harm can be minimised.
- 16.4 The gaps along Doncaster Road allow for long views onto the relatively undeveloped flood plains to the east, and these form an important part of the character of this area of the village. Where development to the east has occurred in the past, it has harmed the relationship between the settlement pattern and the underlying topography.
- 16.5 Closing these gaps entirely would remove a key character-forming element from the village, harming its identity. Should new development be allowed here, then it should be done so in a way that does not harm this aspect of the village's character and the views across the Ryton Valley.
- 16.6 There are two major areas in which these views are available, both along Doncaster Road Gap North and Gap South.
- 16.7 The land falls away towards the east, and people moving along the Doncaster Road are presented with an open setting, long views over the lowland towards the river, and with only sporadic structures visible in the landscape such as Blyth church tower. Much of this area is functional floodplain, which explains why it remains relatively undeveloped.
- 16.8 The northern most of these gaps in the development line can be found in an area roughly opposite the entrance to the former Firbeck Colliery site situated to the north west of the village. Field boundary hedgerows obscure some of the near-ground view from the street, but the backdrop of green fields and hedgerow trees is visible, as are views onto copses and other patches of woodland trees. Very far views of the Trent Valley and Cottam Power Station are also available from this space.



16.9 Entirely closing this gap along the street by adding ribbon development would damage the character of this part of Doncaster Road; the gaps and views are as much a part of its character as the built form.



1. Views Northeast towards Hodsock Grange



2. Views Southeast over Ryton Valley and Doncaster



- 16.10 Two other views on Doncaster Road can be found starting at the Riddell Arms public house to the south and extending to bus stop on the southbound carriageway of the A60 / Doncaster Road. The other is located opposite the old Firbeck Colliery entrance and adjacent to Guest Villas on Doncaster Road.
- 16.11 Here, panoramic views to the east open as you travel from the south, giving the impression of emerging from the urbanised core of Carlton in Lindrick onto the river plains that make up this part of Nottinghamshire. Far views are available over the hedgerow, and the oblique views along the road reveal that the sporadic development here remains shallow to the street, with the back gardens providing a soft, green transition into the open countryside.
- 16.12 This is in stark contrast to the newer development along Pinfold Drive and Greenfields Way, which extends deep into the green space to the east of the village and does so with a dense, more urban form. Planting to the edges of this development help to soften the views onto it, but it is notably out of character in terms of the way it sits in relation to the topography of the area and the patterns of development for the rest of the village.
- 16.13 This gap in the building line and the relationship with the wider landscape setting generates an important characteristic of Carlton in Lindrick, revealing how the village has grown on the higher ground to the west and allowing for long views which are a key part of the user experience of visiting the area. Where new development has been allowed into the fields along the eastern edge of the Doncaster Road, it has weakened the distinctiveness of the village, harming its character.



3. Views towards, and beyond, Highfield Villas, Doncaster



4. Views East over Ryton Valley and countryside



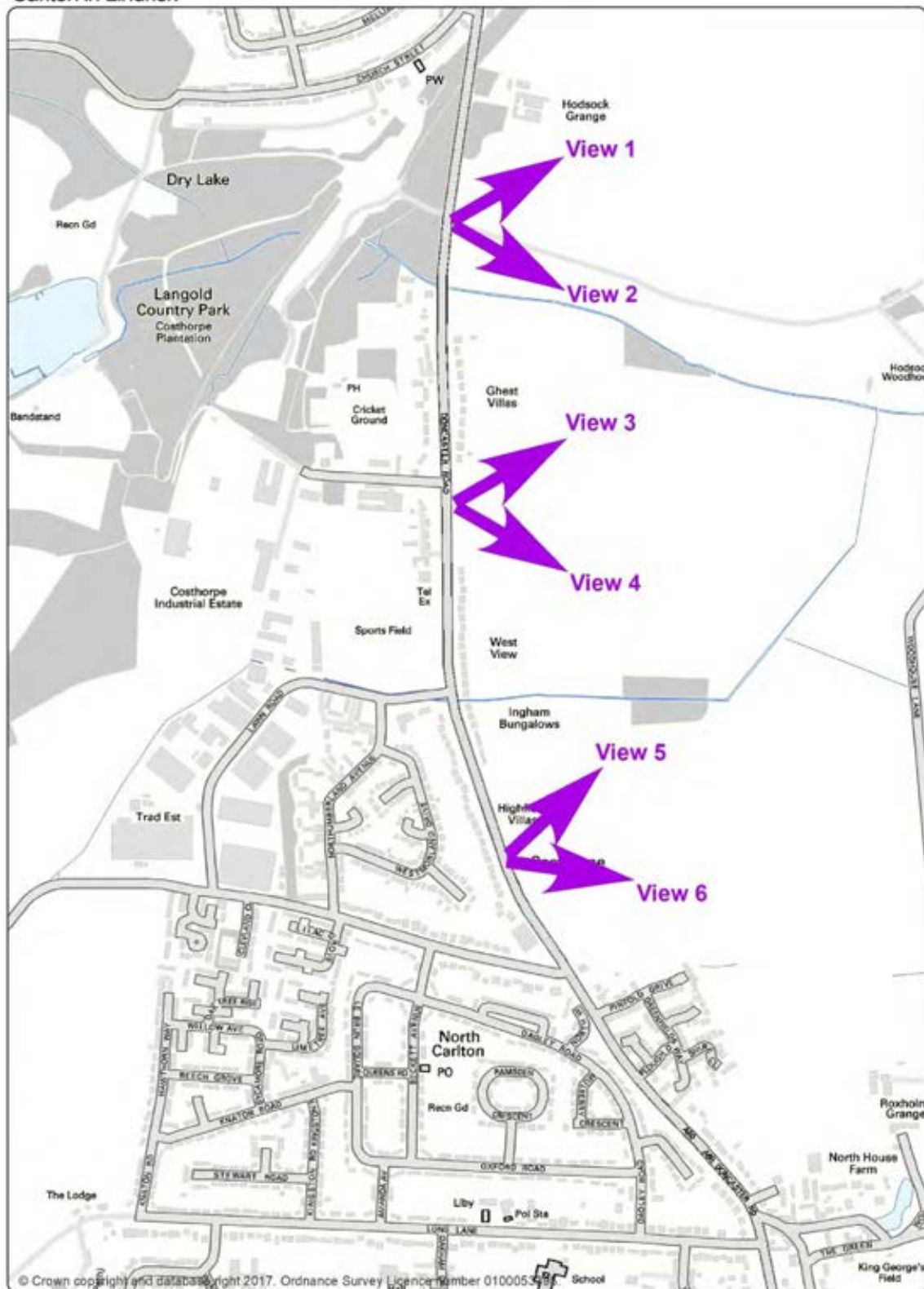
5. Views East over Ryton Valley and countryside





Map 6: Important Views

Carlton in Lindrick





Policy 11: Important Views along Doncaster Road

1. Development that would detract from the purpose of these important views, which is to preserve the open views towards the Ryton Valley and open countryside, as identified on map 6, and rural character of land along Doncaster Road, will not be supported.
2. Proposals to conserve, protect and/ or otherwise enhance the views for the benefit of the communities, for leisure and recreation use and provision as a haven for wildlife, will be strongly supported.



17 Langold Country Park



- 17.1 Green Infrastructure is a network of green spaces such as parks, recreation grounds, allotments, canals or rivers, and the connections between these spaces which can deliver a range of environmental, economic, health and wellbeing benefits for the local community. The Green Infrastructure network may comprise of spaces in both public and private ownership, with or without public access. Green Infrastructure in the plan area includes public parks (Langold Country Park), community gardens, and amenity greenspaces – including play areas, communal spaces within housing areas, cemeteries, churchyards, ditches, cycle routes, pedestrian paths, rights of way and bridleways; natural and semi-natural greenspaces and woodland.
- 17.2 Green infrastructure can offer a wide range of direct and indirect benefits for a community, this includes; reducing climate change, improving the quality of a place, improving health and social wellbeing, protecting and enhancing biodiversity, providing opportunities for local food production and protecting and enhancing landscape character. It is important that this Neighbourhood Plan where ever possible encourages the protection and enhancement of Green Infrastructure in Carlton in Lindrick.
- 17.3 Within Bassetlaw District Council's Green Infrastructure Plan May 2010, the vision states:
- "In 2026 green infrastructure will be an integral part of the development process, ensuring that people and places in Bassetlaw benefit from a strong network of multifunctional green spaces. Strong connectivity within and between...rural villages and the wider countryside will minimise habitat fragmentation and contribute to green and attractive places where people enjoy living, working and visiting."*



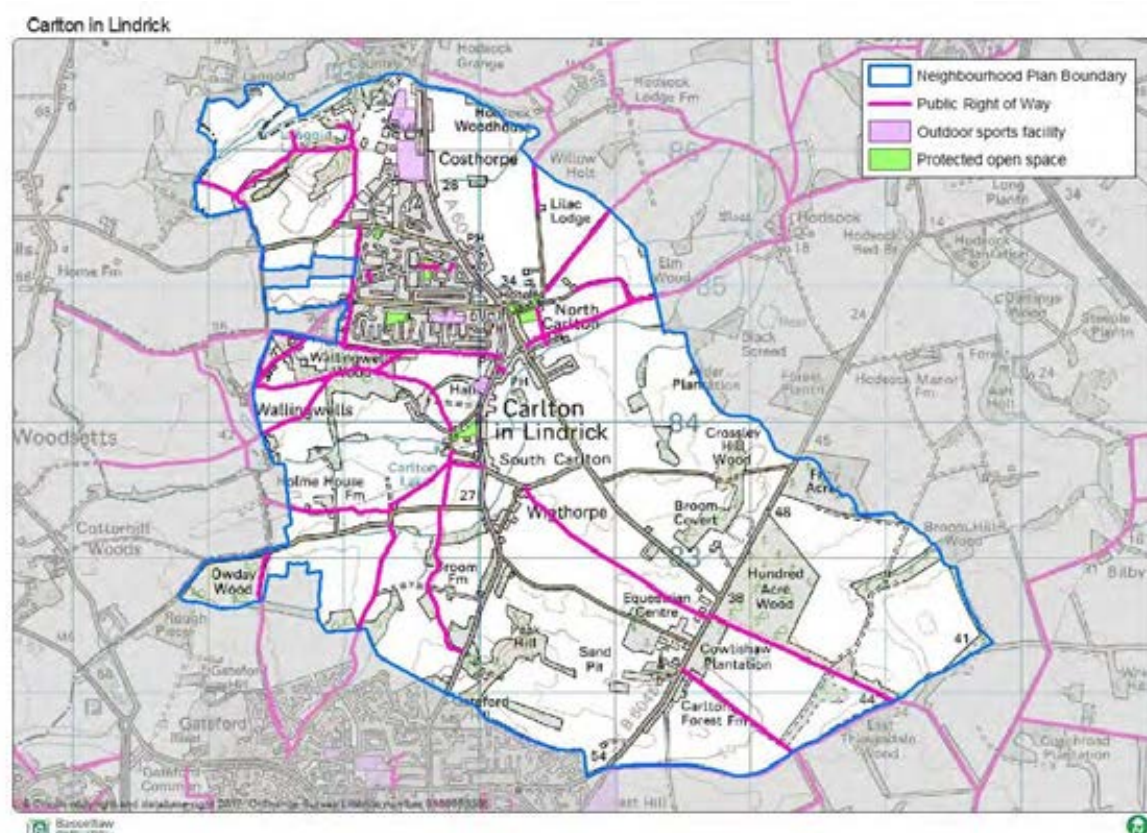
- 17.4 Enhancing the public access network through upgrading the condition and / or status of existing paths; and the creation of new off-road routes, will provide a range of safe and attractive paths. The linking of new and existing routes will lead to the establishment of a series of circular routes, providing walking, cycling and in places horse riding options to both residents and visitors to the area.

Further information on the Bassetlaw Green Infrastructure Study can be found:

<http://www.bassetlaw.gov.uk/everything-else/planning-building/planning-policy/core-strategy-development-management-policies/background-studies.aspx>

- 17.5 The establishment of any new walkable routes will need to be done in collaboration with Carlton and Hodsock Estates and the appropriate tenant farmer(s) and Carlton in Lindrick Parish Council.

Map 7: Green Infrastructure Network



- 17.6 In 2010, Bassetlaw District Council undertook an Open Space and Play Pitch Assessment to support the development of the Core Strategy. This assessment looks at the accessibility and quality of existing open spaces in Carlton and identifies areas of future need and improvement.

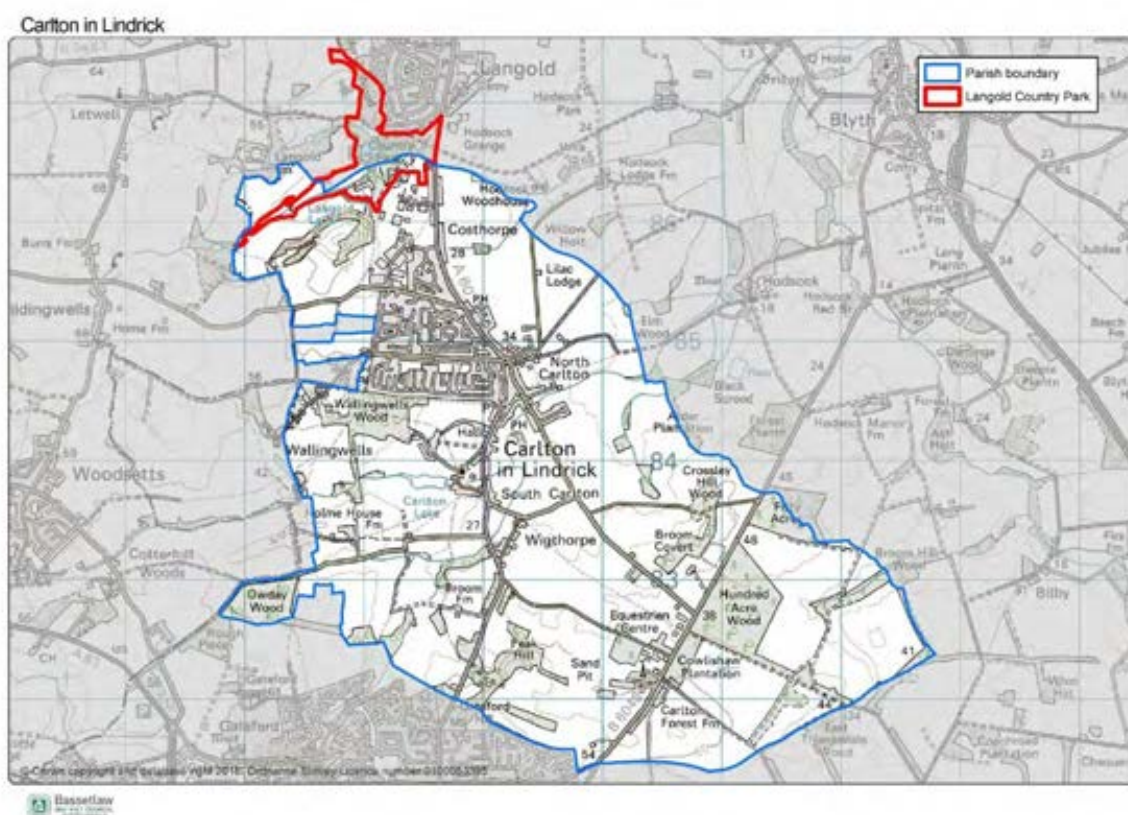


- 17.7 The assessment clearly identifies Langold Country Park as highly valued, but of poor quality. It also recommends that this should be a focus for investment and improvement. There are opportunities for contributions from future developments to be invested into Langold Country Park to improve the quality of the space for residents.
- 17.8 The assessment also encourages new open spaces within the area – especially sports and recreation facilities. It also recommends that new developments should provide accessible and good quality open spaces that comply with national and local ‘good practice’ standards and recommendations.

Further information on the Bassetlaw Open Space and Play Pitch Study can be found:

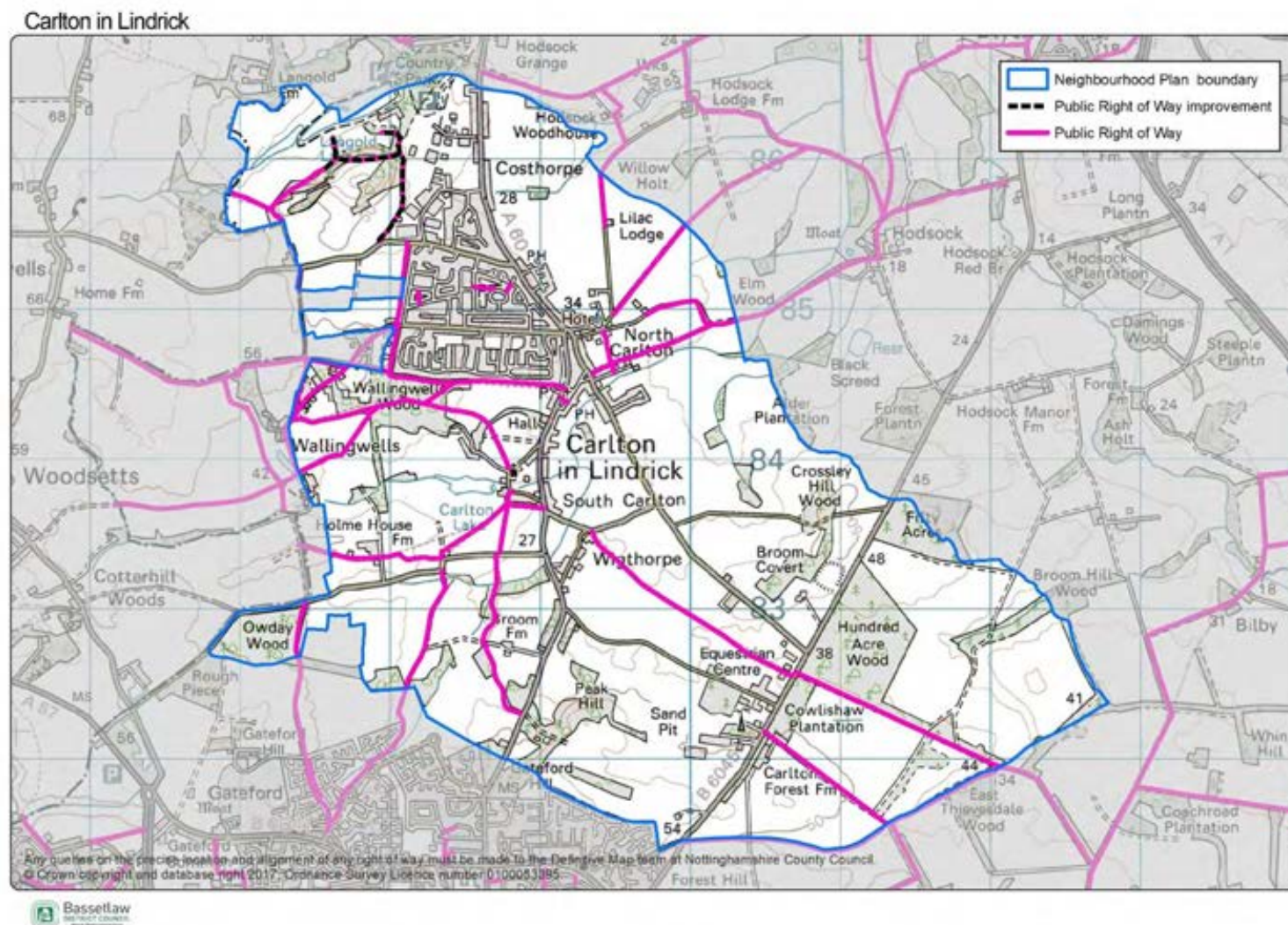
<http://www.bassetlaw.gov.uk/everything-else/planning-building/planning-policy/core-strategy-development-management-policies/background-studies.aspx>

Map 8: Langold Country Park





Map 8: Public Right of Way Improvement





Policy 12: Langold County Park

1. All relevant development proposals on site or adjacent to Langold Country Park, as identified on map 8, shall assist in the delivery of the long term aim of creating an easily accessible and attractive pedestrian and cycle corridor connecting the Park with the rest of the village. Proposals should seek to improve connectivity between the Park and other areas of the village, including the identified allocated development sites.
2. Where relevant, proposals for sites adjacent to Langold Country Park should seek to extend and enhance the existing public realm and the network of public rights of way.
3. Proposals should seek to incorporate attractive street furniture, signage and surfacing to improve general connectivity and sense of place in the area.



18 Local Green Spaces

- 18.1 There are number of key public open spaces within the Parish that are not protected, but form part of the wider green infrastructure to the area and this Neighbourhood Plan seeks to protect the following through a Local Green Space designation.

The National Planning Policy Framework gives Neighbourhood Plans powers to designate certain areas as Local Green Spaces. The designation gives these spaces the same protection as green belt policy. The Green Infrastructure Project Proposal identified several areas that meet the eligibility criteria in the NPPF (see paragraphs 76-78). The criteria require a Local Green Space to:

- Be in reasonable proximity to the community it serves;
- Be demonstrably special to the local community and holds local significance;
- Be local in character and is not an extensive tract of land;
- Not have previous planning permission(s) within which the Local Green Space could not be accommodated; and
- Not to be allocated for development within the District Council's Local Plan.

- 18.2 It has been suggested, through public consultation and discussions within the Neighbourhood Plan Steering group, that the following sites should be designated as Local Green Spaces as these spaces are currently unprotected and valued for their visual and recreational amenity. The sites identified below are those that are not owned by the Parish Council and have the potential to be developed in the future.



Table 6: Proposed Local Green Space Justification

Open Space	Area (Ha)	Landscape Quality	Historical Quality	Recreational Quality	Ecological Quality	Why it should be protected?
1 Allotments	0.12	Forms part of the wider green infrastructure for Carlton in Lindrick	N/A	Informal growing spaces for residents to grow their own food.	Provides a haven for local wildlife such as birds and insects.	The site is considered community assets and is regularly used by local people. There are plans for expansion due to local demand.
2 Land opposite Blue Bell Public House	0.56	Forms part of the wider green infrastructure for Carlton in Lindrick.	This section of green space has been part of the character of this part of Carlton since the current housing was built in the 1950's.	An informal amenity space used for informal activity and community interaction.	Provides an area for local wildlife and has been largely untouched.	It is a linear area of amenity space that forms part of the local character to this part of the village. It is a highly valued area and used regularly.
3 Lambert Memorial Ground	0.13	Forms part of the wider green infrastructure for Carlton in Lindrick	Forms part of the military history for the parish.	Regularly used for amenity, rest and tranquillity.	Has some trees and grassed area that is used by local wildlife.	This area is highly valued by the local community and is currently unprotected.



Open Space	Area (Ha)	Landscape Quality	Historical Quality	Recreational Quality	Ecological Quality	Why it should be protected?
4 Grassed areas – Pinfold Drive	0.42	Forms part of the wider green infrastructure for Carlton in Lindrick.	This space formed part of a development contribution.	Regularly used for amenity and play. Informal kick-about are also frequent.	Has some trees and grassed area that is used by local wildlife.	This area is unprotected and regularly used by residents and children.
5 Dadley Road	0.20	Forms part of the wider green infrastructure for Carlton in Lindrick	N/A	Used frequently as an amenity green space and seating area. Local children often use it in the summer for informal play and sport activity.	Has some trees and grassed area that is used by local wildlife.	It is an important space within an existing development that is used by local people. Children often use it for informal Ply and sport activities.
6 Arundel Drive	0.09	Forms part of the wider green infrastructure for Carlton in Lindrick	N/A	Used frequently as an amenity green space and seating area	Largely open grassland	It is an important space within an existing development that is used by local people.
7. Land behind Civic Centre	1.09	Forms part of the wider green	N/A	Used regularly by local families and	Largely open grassland	It is an important space within an existing development that is used by



Open Space	Area (Ha)	Landscape Quality	Historical Quality	Recreational Quality	Ecological Quality	Why it should be protected?
		infrastructure for Carlton in Lindrick		children for play and informal sport recreation		local people. Children often use it for informal Ply and sport activities.
8. Beckett Avenue	0.83	Forms part of the wider green infrastructure for Carlton in Lindrick	N/A	Used frequently as an amenity green space and seating area	Largely open grassland	It is an important space within an existing development that is used by local people. Children often use it for informal Ply and sport activities.
9. Northumberland Avenue	0.26	Forms part of the wider green infrastructure for Carlton in Lindrick	N/A	Used frequently as an amenity green space and seating area	Largely open grassland	It is an important space within an existing development that is used by local people. Children often use it for informal Ply and sport activities.
10. Costhorpe Playing Field	1.39	Forms part of the wider green infrastructure for Carlton in Lindrick	N/A	Regularly used by local sports teams for formal and informal sport recreation	Largely open grassland	It is an important space within an existing development that is used by local people. Children often use it for informal Ply and sport activities.
11. King George Playing Field	0.95	Forms part of the wider green infrastructure	N/A	Regularly used by local sports teams for formal and	Largely open grassland	It is an important space within an existing development that is used by local people. Children often use it for informal Ply and sport activities.



Open Space	Area (Ha)	Landscape Quality	Historical Quality	Recreational Quality	Ecological Quality	Why it should be protected?
		for Carlton in Lindrick		informal sport recreation		
12. West Moorland Drive	0.23	Forms part of the wider green infrastructure for Carlton in Lindrick	N/A	Used frequently as an amenity green space and seating area	Largely open grassland	It is an important space within an existing development that is used by local people. Children often use it for informal Ply and sport activities.



Map 9: Local Green Spaces





Policy 13: Local Green Space

1 The following spaces are designated as 'Local Green Spaces', as identified on map 9, in accordance with the National Planning Policy Framework's Local Green Space criteria:

- a) LGS1: Allotments
- b) LGS2: Land opposite Blue Bell Public House
- c) LGS3: Lambert Memorial Gardens
- d) LGS4: Grassed area, Pinfold Drive
- e) LGS5: Dadley Road
- f) LGS6: Arundel Drive
- g) LGS7: Ramsden green
- h) LGS8: New Burial Ground
- i) LGS9: Northumberland Avenue
- j) LGS10: Land at Civic Centre
- k) LGS11: Costhorpe Playing Field

2 Associated buildings, spaces, fixtures and fittings, required to enhance the spaces for public use, will be supported.



19 Enhancing Community facilities



- 19.1 Community facilities are an important part of any community and encourage community involvement, interaction and sustainable development.
- 19.2 With a growing community, it is vital that there are sufficient services and infrastructure to support their needs. Although Carlton has many services and facilities, it should not be looked in isolation. The village is close to both Worksop and Langold who have additional services and facilities which are accessible to residents by car or public transport.
- 19.3 The consultation identified that the built community facilities within the village were of a good quality and provided useful spaces to provide social activities.
- 19.4 Not all community facilities are classified as 'critical' to support growth, but there are some services and facilities that do support new developments and an increased population and are used on a regular basis and therefore should be identified as key services and facilities to enable the village to retain as many of these important services as possible. New developments should be encouraged to be near these facilities or provide new, enhanced or additional links to improve access to and from these facilities.
- 19.5 The NPPF identifies the importance of planning for the facilitation of social interaction and creating healthy, inclusive communities (paragraph 69). Paragraph 70 of the NPPF reads "*To deliver the social, recreational and cultural facilities and services the community needs, planning policies and decisions should:*
- *plan positively for the provision and use of shared space, community facilities (such as local shops, meeting places, sports venues, cultural buildings, public houses and places of worship) and other local services to enhance the sustainability of communities and residential environments;*



- *guard against the unnecessary loss of valued facilities and services, particularly where this would reduce the community's ability to meet its day-to-day needs;*
- *ensure that established shops, facilities and services can develop and modernise in a way that is sustainable, and retained for the benefit of the community; and*
- *ensure an integrated approach to considering the location of housing, economic uses and community facilities and services."*

19.6 The key services and facilities within the Parish are identified as:

- The Primary Schools;
- The Coop Foodstore
- The Riddell Arms Public House
- Public houses;
- Civic Centre
- Youth Centre

19.7 The community supports the development of additional community facilities and believes new developments can bring new or enhanced facilities in the village. Through the consultation it was recognised that the village had some good quality facilities such as the Civic Centre and Youth Centre.

19.8 During the consultation period, some of the comments received from the residents were as follows:

'The Civic Centre needs protecting'

'Community services and events in the village need protecting'

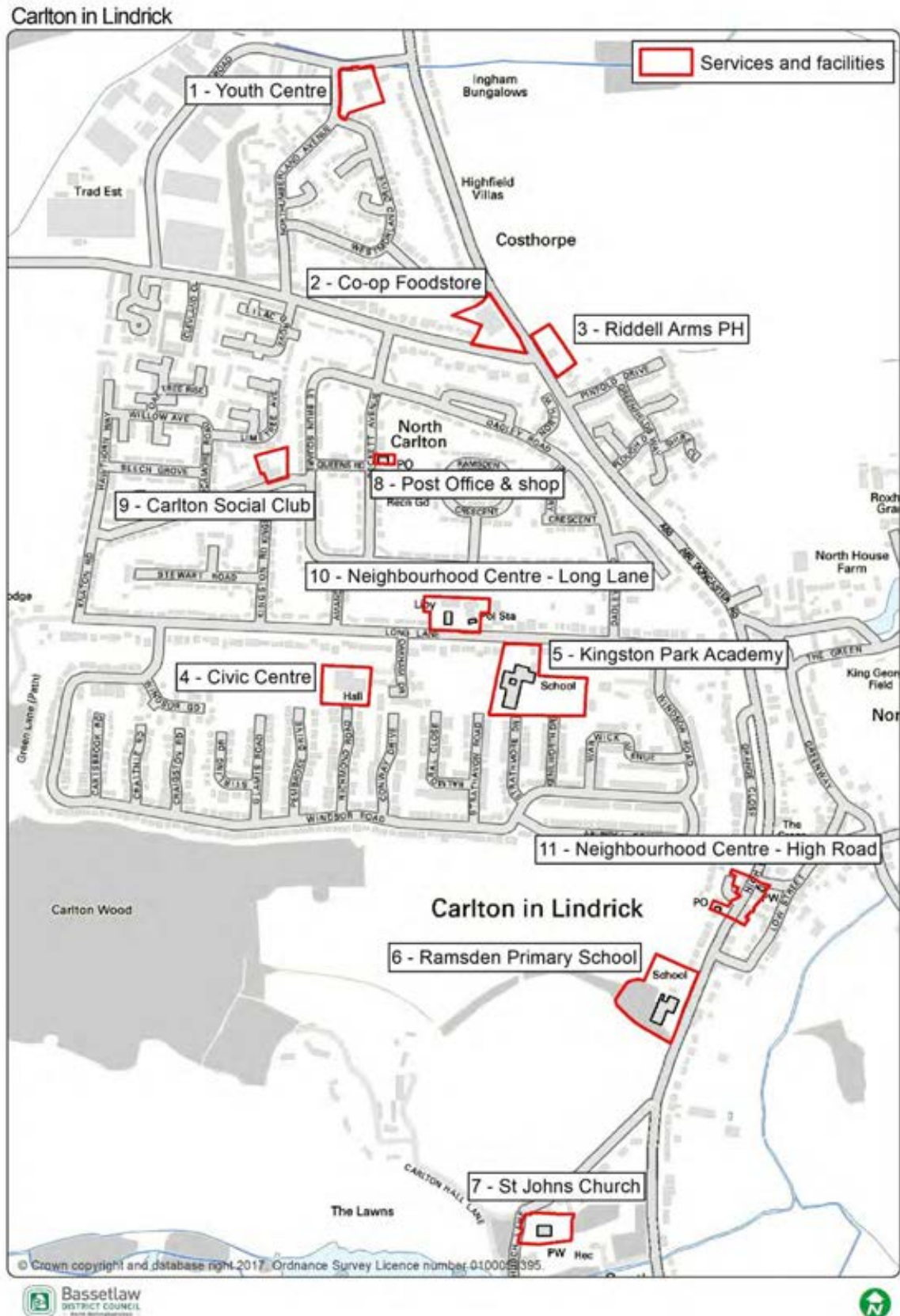
'Concerned that the library will close'

'Carlton could do with some more things for younger people'





Map 10: Community Facilities





Policy 14: Enhancing Community Facilities

Existing Facilities

- 1 Development proposals shall recognise existing community facilities, as identified on map 10, outside the designated Neighbourhood Centres are identified as protected community buildings and facilities.
2. Development that will result in the loss of buildings or facilities currently or previously used for service and facilities will not be supported, unless:
 - a) alternative provision, with explicit community support, or of equivalent or better quality will be provided and made available prior to the commencement of development; or
 - b) It is evidence that there is no reasonable prospect of the service or facility being retained or resurrected; or
 - c) It is evident that the service or facility is no longer economically viable**; or
 - d) there is little evidence of local use of that service or facility.

New Facilities as part of wider development proposals

3. Where new community facilities are deemed necessary as part of a wider development proposals (such as the development of the identified allocated sites in this Plan), developers will be expected to provide such relevant facilities either directly onsite and/ or offsite, through a financial contribution, either alone or cumulatively with other developers.
4. Opportunities to incorporate community facilities within or directly adjacent to the development site should be sought in the first instance. Offsite provision may be acceptable as an alternative if:
 - a) there is insufficient space available onsite/ directly adjacent to the site; or
 - b) Incorporation of the facility onsite/ directly adjacent to the site would not be financially viable; or
 - c) It would be more appropriate to contribute (in whole or part) to the establishment or expansion of a facility elsewhere to meet wider demand or combine existing facilities.

*** Applicants will be expected to demonstrate, to the Council's satisfaction, that all reasonable efforts have been to sell and let the site or premises for its existing use(s) or another community use at a realistic price for, at least, a 12-month period.*



20 Neighbourhood Centres

- 20.1 The Neighbourhood Plan Steering Group, the Parish Council and the community believe it is vital to protect and enhance the existing retail services and facilities within the village. These services and facilities provide valuable amenities for residents within Carlton and neighbouring communities. During consultation, residents wanted to encourage a broader level of retail provision within the area. It was also highlighted that there are issues with accessibility, through a lack of reliable public transport to access services and retail in Worksop or Doncaster. Residents were also concerned about an increasing number of hot food take-aways which could impact the vitality of the area.
- 20.2 Retail provision is an important asset to the village and it is important that the existing retail provision is protected and enhanced to support a growing and sustainable community. The Bassetlaw Retail and Leisure Study (2017) undertook a 'health check' on the identified Neighbourhood Centres and identified a range of retail provision with no vacant units indicating a healthy retail situation within the village.
- Further information on the Bassetlaw Open Space and Play Pitch Study can be found:
<http://www.bassetlaw.gov.uk/everything-else/planning-building/planning-policy/core-strategy-development-management-policies/background-studies.aspx>
- 20.3 Within the Neighbourhood Centres, development proposals will be encouraged where the schemes are shown to make a positive contribution to the retail experience including how the development supports other policies within this Neighbourhood Plan. Local people expressed support for new facilities and retail offer within the village. However, people also raised concern about the lack of choice in shops and the increase in hot food takeaways which are often shut during the daytime and causes the area to be unsightly with metal shutters.
- 20.4 People wanted to see the areas attractiveness improved and the regeneration of the shop fronts, paving and signage to encourage use and new businesses into the area. Neighbourhood Centre (1) – at Long Lane was an area that was identified by residents that needed improvements. Urbanised shop frontages, litter and inadequate lighting were all raised during public consultation.



Neighbourhood Centre 1: Shopping Parade of Long Lane



20.5 The Neighbourhood Centre at Long Lane provides an important community functional hub of local services and facilities. The services and facilities present and operating within the Neighbourhood Centre include:

- The Library
- The Primary School
- One Stop Shop
- Pizza King Take Away
- Pharmacy
- CK Catering
- Pioneer Chinese
- Ciseaux
- The Royal Catch
- Doctors Surgery



Neighbourhood Centre 2: High Road - parade of shops in South Carlton

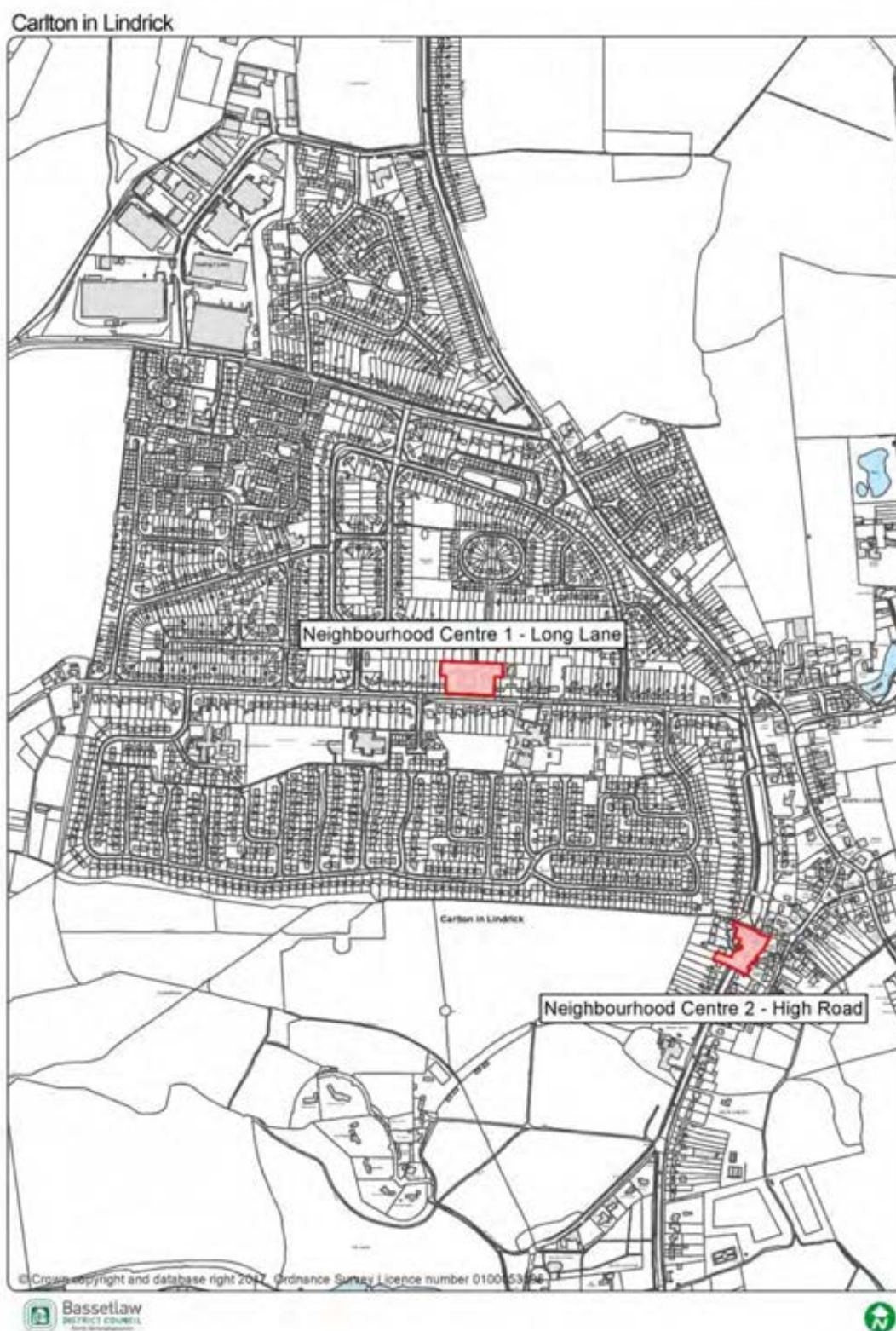


20.6 The Neighbourhood Centre at Long Lane provides an important community functional hub of local services and facilities. The services and facilities present and operating within the Neighbourhood Centre include:

- Carlton Photography
- Honey Pot
- Minnie and Ruth's Tea Room
- Bridal Shop
- The Sherwood Ranger
- Carlton Fish Bar
- Barber Queue
- Cassio's
- Post Office
- Methodist Chapel and Centre



Map 11: Neighbourhood Centres





Policy 15: Neighbourhood Centres

1. Proposals involving the change of use, at ground floor level, of these retail facilities, including A1, A2, A3 and A4 to non-retail uses, within the Neighbourhood Centre, as identified on map 11, will not be supported unless:
 - a) It can be demonstrated, to the satisfaction of the Local Planning Authority, that there is no longer a need for the facility or the premises are unsuitable or not economically viable** for the continued provision of a retail facility.
2. New retail facilities will be encouraged where they are providing a mix of retail provision within that specific centre and contribute towards the continued vitality of the Neighbourhood Centre.
3. Development for the provision, alteration or replacement of shop fronts and signs in the High Road Neighbourhood Centre will be supported provided:
 - a) they do not require the loss of an existing shop front with a historic value; and
 - b) the design, colour, materials and details of the alterations to and replacements of shop fronts and signage sustain or enhance the character of the building and surrounding shop frontages and are in-keeping with the Carlton Conservation Area.
4. Proposals that seek to improve the public realm of the Neighbourhood Centres shall be supported where the materials contribute towards the improvement of wider public amenity and enhance the character of the area.

***Applicants will be expected to demonstrate, to the Council's satisfaction, that all reasonable efforts have been to sell and let the site or premises for its existing use(s) or another community use at a realistic price for, at least, a 12-month period.*



21 Community Aspirations and Priority Projects

- 21.1 The Neighbourhood Plan aims to achieve community priorities and recognises not all of these can be delivered through planning policies. Throughout the consultation period, the community identified several projects that they would like to see delivered through this Neighbourhood Plan. These projects are closely link to Community Infrastructure Levy priorities and are to be delivered over the longer term and therefore are aspirational.

Community Aspiration 1: Improvements to Doncaster Road/ Long Lane junction

A significant number of residents highlighted the need to improve the traffic flow and pedestrian safety at the Long Lane/ Doncaster Road junction. It was stated that during peak times of the day, there could be significant hold ups and there have been issues with public safety.

Residents suggested that some monies received from CIL could be used to improve these issues and make the area safer for users.

Community Aspiration 2: Regeneration of the vacant site at Warwick Avenue

An area on Warwick Avenue has laid redundant for a few years and residents have indicated that this could be an area to see redevelopment to contribute to the regeneration of the area.

Community Aspiration 3: Improved Langold Country Park

Many people wanted to see Langold Country Park improved to increase usage and maximise its potential.

Upgrading the play facilities for children

Improving the car parks and public conveniences

Increase the level of attractions within the Park

Improve the access to and from the Park

Community Aspiration 4: Improved skills and training opportunities for residents

To further improve the social-economic issues identified within the social profile, it is believed that opportunities for increased choice and awareness of new training programs should be supported. This could be through new developments, but also through the collaboration between nearby education facilities, developers and the wider community.



22 Implementation and Review of this Neighbourhood Plan

- 22.1 The policies in this Plan will be implemented by Bassetlaw District Council as part of their development management process. Where applicable Carlton in Lindrick Parish will also be actively involved. Whilst Bassetlaw District Council will be responsible for development management, Carlton in Lindrick Parish Council will use the Neighbourhood Plan to frame its representations on submitted planning applications.
- 22.2 The use of section 106 agreements for Affordable Housing, planning conditions and the Community Infrastructure Levy by Bassetlaw District Council will be expected to assist in delivering the objectives of this Plan.
- 22.3 The Parish Council will use this and other funds as leverage to secure funding from other programmes, for example the Lottery and other Government initiatives as they become available.
- 22.4 As the Neighbourhood Plan will become part of a hierarchy of planning documents the Parish Council will also look to District and County Council investment programmes where a policy and/or project can be shown to be delivering District and County objectives.
- 22.5 The impact of the Neighbourhood Plan policies on influencing the shape and direction of development across the Plan area will be monitored by the Parish Council. If it is apparent that any policy in this Plan has unintended consequences or is ineffective it will be reviewed.
- 22.6 Any amendments to the Plan will only be made following consultation with Bassetlaw District Council, local residents and other statutory stakeholders as required by legislation.
- 22.7 The Neighbourhood Planning Act 2017 now requires all 'made' Neighbourhood Plans to be reviewed every 5 years.



23 Appendix 1: Community Consultation

- 23.1 An underlying principle in this Neighbourhood Plan is to have local people actively involved in ongoing consultation on important planning issues. Many of our policies expressly call for community involvement designed to understand local views about development proposals before planning applications are submitted.

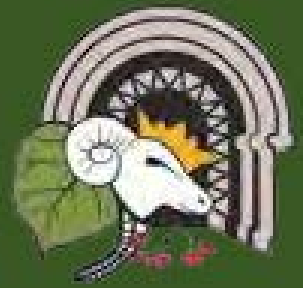
Pre- Application Consultation should involve the following:

- a) An explanation of how a broad cross-section of local people, both in the immediate area likely to be affected by the development proposals and in the wider neighbourhood, was consulted on the development proposals in a timely fashion.
- b) The means used to involve and engage with local people in consultation, using a range of ways in which input, and comments could be provided. For example, a variety of publicity and the opportunity to provide web-based comments as well as attending events in person.
- c) A record of the views expressed by local people and the relevant Parish Council.
- d) An explanation of how the proposals being submitted following this Consultation have addressed the views of and any issues or concerns raised by local people and the Parish Council.



24 Appendix 2: Site Assessment Report

Please see separately attached document.



Thank you for taking the time to read Carlton's draft Neighbourhood Plan.

The consultation will commence on the **xxxx** and close on the **xxx**.

All completed response forms should be returned to:

Carlton Parish Council

Civic Centre

Long Lane

Carlton in Lindrick

S81 9AP

Alternatively, you can email Responses to:

parishcouncil@civiccentre.org.uk

You can also find out more information about Neighbourhood Planning at:

www.locality.org/neighbourhoodplanning

www.bassetlaw.gov.uk

January 2018